



# Government Gazette Staatskoerant

REPUBLIC OF SOUTH AFRICA  
REPUBLIEK VAN SUID AFRIKA

Vol. 728

5

February  
Februarie 2026

No. 54087

N.B. The Government Printing Works will not be held responsible for the quality of "Hard Copies" or "Electronic Files" submitted for publication purposes

ISSN 1682-5845



**AIDS HELPLINE: 0800-0123-22 Prevention is the cure**

**IMPORTANT NOTICE:**

**THE GOVERNMENT PRINTING WORKS WILL NOT BE HELD RESPONSIBLE FOR ANY ERRORS THAT MIGHT OCCUR DUE TO THE SUBMISSION OF INCOMPLETE / INCORRECT / ILLEGIBLE COPY.**

**No FUTURE QUERIES WILL BE HANDLED IN CONNECTION WITH THE ABOVE.**

**Contents**

<i>No.</i>		<i>Gazette No.</i>	<i>Page No.</i>
<b>GOVERNMENT NOTICES • GOEWERMENTSKENNISGEWINGS</b>			
<b>Transport, Department of / Vervoer, Departement van</b>			
7096	The South African National Roads Agency Limited and National Roads Act, 1998 (Act No. 7 of 1998): Publication of the amounts of Toll for the different categories of motor vehicles, and the date and time from which the toll tariffs shall become payable .....	54087	3
7096	Die Suid-Afrikaanse Nasionale Padagentskap Beperk en Nasionale Paaie Wet, 1998 (Wet Nr. 7 van 1998): Publikering van die tolbedrae vir die verskillende kategorieë van motorvoertuie, en die datum en tyd vanaf die tolbedrae betaalbaar word .....	54087	7
7097	The South African National Roads Agency Limited and National Roads Act, 1998 (Act No. 7 of 1998): Publication of the amounts of Toll for the different categories of motor vehicles, and the date and time from which the toll tariffs shall become payable .....	54087	11
7097	Die Suid-Afrikaanse Nasionale Padagentskap Beperk en Nasionale Paaie Wet, 1998 (Wet Nr. 7 van 1998): Publikering van die tolbedrae vir die verskillende kategorieë van motorvoertuie, en die datum en tyd vanaf die tolbedrae betaalbaar word .....	54087	15
7098	The South African National Roads Agency Limited and National Roads Act, 1998 (Act No. 7 of 1998): Publication of the amounts of Toll for the different categories of motor vehicles, and the date and time from which the toll tariffs shall become payable .....	54087	19
7098	Die Suid-Afrikaanse Nasionale Padagentskap Beperk en Nasionale Paaie Wet, 1998 (Wet Nr. 7 van 1998): Publikering van die tolbedrae vir die verskillende kategorieë van motorvoertuie, en die datum en tyd vanaf die tolbedrae betaalbaar word .....	54087	23

---

**GOVERNMENT NOTICES • GOEWERMENTSKENNISGEWINGS**

---

**DEPARTMENT OF TRANSPORT**

NO. 7096

5 February 2026

**THE SOUTH AFRICAN NATIONAL ROADS AGENCY SOC LIMITED****NATIONAL ROUTE 4: HANS STRYDOM INTERCHANGE (PRETORIA) TO THE GAUTENG / MPUMALANGA BORDER AND MAPUTO DEVELOPMENT CORRIDOR TOLL ROADS: PUBLICATION OF THE AMOUNTS OF TOLL FOR THE DIFFERENT CATEGORIES OF MOTOR VEHICLES, AND THE DATE AND TIME FROM WHICH THE TOLL TARIFFS SHALL BECOME PAYABLE**

The Head of the Department hereby, in terms of section 28(4) read with section 27(3) of The South African National Roads Agency Limited and National Roads Act, 1998 (Act No. 7 of 1998) [the Act], makes known that the amounts of toll to be levied in terms of section 28(2) of the Act at the toll plazas located on the Hans Strydom Interchange (Pretoria) to the Gauteng / Mpumalanga Border and Maputo Development Corridor Toll Roads, and the date and time from which the amounts of toll shall become payable, have been determined by the Minister of Transport in terms of section 27(3)(a) of the Act, and that the said amounts shall be levied in terms of section 28(4) read with section 27 of the Act, as set out in the Schedule.



**Mr Mathabatha Mokonyama**  
**ACTING DIRECTOR-GENERAL: TRANSPORT**

## SCHEDULE

### 1. DEFINITIONS

The following words and expressions shall have the meanings stated, unless the context otherwise indicates.

- 1.1 “**Abnormal vehicle**” means a motor vehicle exceeding the legal dimensions as described in the Road Traffic Act, 1996 (Act No. 93 of 1996), as amended, or in any other law.
- 1.2 “**Axle**” means a device or set of devices, whether continuous across the width of the vehicle or not, about which the wheels of the vehicle rotate and which is so placed that, when the vehicle is travelling straight ahead, the vertical centre-lines of such wheels are in one vertical plane at right angles to the longitudinal centre-line of such vehicle. Axle shall also include an axle that is lifted and of which the wheels are not in contact with the road surface.
- 1.3 “**Heavy axle**” means an axle the wheels of which are fitted with tyres of a size (bead seat diameter) greater than 406,4 millimetres (16 inches), or an axle with more than two (2) wheels irrespective of tyre size, but excluding any axle of a motorcycle, a motor tricycle or a motor car.
- 1.4 “**Heavy vehicle**” means a motor vehicle with at least one heavy axle and/or any vehicle which is principally designed or adapted for the conveyance of persons exceeding sixteen (16) in number.
- 1.5 “**Light delivery vehicle**” means a motor vehicle designed or adapted for the conveyance of persons and freight with no heavy axle as defined in paragraph 1.3 above.
- 1.6 “**Light vehicle**” means a motor vehicle, other than a heavy vehicle.
- 1.7 “**Motor car**” means a motor vehicle, other than a motorcycle or a motor tricycle, designed or adapted solely or principally for the conveyance of persons not exceeding sixteen (16) in number, but excluding any vehicle with an axle with more than two (2) wheels irrespective of tyre size.
- 1.8 “**Motorcycle**” means a motor vehicle that has two wheels and includes any such vehicle having a side-car attached thereto.
- 1.9 “**Motor tricycle**” means a motor vehicle, other than a motorcycle with a side-car, which has three wheels and which is designed to be driven by means of the type of controls usually fitted to a motorcycle.
- 1.10 “**Motor vehicle**” means an entity comprising of one or more mechanically/electrically powered units with or without any trailer(s) physically joined by means of tow bars, tow ropes or mechanical articulation, and includes, inter alia:
  - (a) a motorcycle;
  - (b) a motor tricycle;
  - (c) a motor car;
  - (d) a vehicle which has pedals and a mechanically/electrically powered unit as an integral part thereof or attached thereto and which is designed or adapted to be propelled by means of either such pedals or such mechanical/electrical unit or both; and
  - (e) a light delivery vehicle (a bakkie).

- 1.11 **“Trailer”** means a vehicle which is not self-propelled and which is designed or adapted to be drawn by a motor vehicle but does not include a side-car attached to a motorcycle.

## 2. CATEGORIES OF MOTOR VEHICLES

**Class 1: *Light vehicles:***

Light vehicles are motor vehicles, other than heavy vehicles as defined above, with or without a trailer, and include motorcycles, motor tricycles and motor cars.

**Class 2: *Medium heavy vehicles:***

Medium heavy vehicles are heavy vehicles, as defined above, with two axles.

**Class 3: *Large heavy vehicles:***

Large heavy vehicles are heavy vehicles, as defined above, with three or four axles.

**Class 4: *Extra large heavy vehicles:***

Extra large heavy vehicles are heavy vehicles, as defined above, with five or more axles.

**3. TOLL TARIFF**

- 3.1 The amounts of toll for the different categories of motor vehicles payable at the toll plazas located on the Hans Strydom Interchange (Pretoria) to the Gauteng / Mpumalanga Border and Maputo Development Corridor Toll Roads, for the usage of a section of toll road (or any part thereof), are stated in Table 1.

<b>ROUTE</b>	<b>PLAZA</b>		<b>CLASS 1</b>	<b>CLASS 2</b>	<b>CLASS 3</b>	<b>CLASS 4</b>
N4	Donkerhoek	Ramp	R 17.00	R 24.00	R 34.00	R 66.00
N4	Cullinan	Ramp	R 21.00	R 34.00	R 51.00	R 86.00
N4	Diamond Hill	Mainline	R 51.00	R 70.00	R 133.00	R 220.00
N4	Valtaki	Ramp	R 39.00	R 55.00	R 81.00	R 183.00
N4	Ekandustria	Ramp	R 31.00	R 47.00	R 65.00	R 130.00
N4	Middelburg	Mainline	R 84.00	R 182.00	R 277.00	R 365.00
N4	Machado	Mainline	R 126.00	R 350.00	R 510.00	R 729.00
N4	Nkomazi	Mainline	R 95.00	R 193.00	R 281.00	R 405.00

**4. OPERATIONAL HOURS**

- 4.1 The said toll road shall be open to traffic for 24 hours a day.

**5. EFFECTIVE DATE**

- 5.1 The date and time from which the said amounts of toll shall become payable, shall be 1 March 2026 at 00:00.

## DEPARTEMENT VAN VERVOER

NO. 7096

5 Februarie 2026

## DIE SUID-AFRIKAANSE NASIONALE PADAGENTSKAP MSB BEPERK

**NASIONALE ROETE 4: HANS STRYDOM WISSELAAR (PRETORIA) NA DIE GAUTENG / MPUMALANGA GRENS EN MAPUTO ONTWIKKELING KORRIDOR TOLPAAIE: PUBLISERING VAN DIE TOLBEDRAE VIR DIE VERSKILLENDE KATEGORIEë VAN MOTORVOERTUIE, EN DIE DATUM EN TYD VANAF DIE TOLBEDRAE BETAALBAAR WORD**

Die Hoof van die Departement maak hierby, kragtens die bepalings van artikel 28(4) saamgelees met artikel 27(3) van Die Suid-Afrikaanse Nasionale Padagentskap Beperk en Nasionale Paaie Wet, 1998 (Wet Nr. 7 van 1998) [die Wet], bekend dat die tolbedrae wat kragtens artikel 28(2) van die Wet gehef sal word by die tolplazas geleë op die Hans Strydom Wisselaar (Pretoria) na die Gauteng / Mpumalanga Grens en Maputo Ontwikkeling Korridor Tolpaaie, en die datum en tyd vanaf die tolbedrae betaalbaar word, kragtens artikel 27(3)(a) van die Wet deur die Minister van Vervoer bepaal is, en dat genoemde bedrae kragtens artikel 28(4) saamgelees met artikel 27 van die Wet gehef sal word, soos in die Bylae uiteengesit.



**Mr Mathabatha Mokonyama**  
**WAARNEMENDE DIREKTEUR-GENERAAL: VERVOER**

**BYLAE****1. WOORDOMSKRYWINGS**

Die volgende woorde en uitdrukkings sal die betekenisse hê soos uiteengesit, tensy dit uit die samehang anders blyk.

- 1.1 “**Abnormale voertuig**” beteken ‘n motorvoertuig wat die wettige afmetings, soos beskryf in die Padverkeerswet, 1996 (Wet Nr. 93 van 1996), soos gewysig, of in enige ander wet oorskry.
- 1.2 “**As**” beteken ‘n toestel of stel toestelle, hetsy onafgebroke oor die breedte van die voertuig of nie, waarom die wiele van die voertuig ronddraai en wat so geplaas is dat wanneer die voertuig reguit vorentoe ry, die vertikale hartlyne van sodanige wiele in een vertikale vlak reghoekig met die langshartlyn van sodanige voertuig is. As sal ook ‘n as insluit waarvan die wiele opgelig en nie in kontak met die padoppervlak is nie.
- 1.3 “**Swaar as**” beteken ‘n as waarvan die wiele toegerus is met bande met ‘n grootte (spanranddeursnee) groter as 406,4 millimeter (16 duim), of ‘n as met meer as twee (2) wiele, ongeag die bandgrootte, maar nie ‘n as van ‘n motorfiets, ‘n motordriewiel of ‘n motorkar nie.
- 1.4 “**Swaar voertuig**” beteken ‘n motorvoertuig met minstens een swaar as en/of ‘n motorvoertuig wat ontwerp of aangepas is uitsluitlik of hoofsaaklik vir die vervoer van meer as sestion (16) persone.
- 1.5 “**Ligte afleweringsvoertuig**” beteken ‘n motorvoertuig wat ontwerp of aangepas is vir die vervoer van persone en vrag met geen swaar as soos omskryf in paragraaf 1.3 hierbo nie.
- 1.6 “**Ligte voertuig**” beteken ‘n motorvoertuig, uitgesonderd ‘n swaar voertuig.
- 1.7 “**Motorkar**” beteken ‘n motorvoertuig, uitgesonderd ‘n motorfiets of motordriewiel, wat ontwerp of aangepas is uitsluitlik of hoofsaaklik vir die vervoer van hoogstens sestion (16) persone, maar uitgesluit enige voertuig met meer as twee (2) wiele, ongeag die bandgrootte, op enige as.
- 1.8 “**Motorfiets**” beteken ‘n motorvoertuig met twee wiele en ook enige sodanige voertuig waaraan ‘n syspan geheg is.
- 1.9 “**Motordriewiel**” beteken ‘n motorvoertuig, uitgesonderd ‘n motorfiets met syspan, wat drie wiele het en ontwerp is om bestuur te word deur middel van die tipe kontroles waarmee ‘n motorfiets gewoonlik toegerus is.
- 1.10 “**Motorvoertuig**” beteken ‘n entiteit bestaande uit een of meer meganies/elektries aangedrewe eenhede met of sonder sleepwa of sleepwaens wat fisies aan mekaar gekoppel is deur middel van sleepstange, sleeptoue of meganiese geleiding en sluit onder andere in:
  - (a) ‘n motorfiets;
  - (b) ‘n motordriewiel;
  - (c) ‘n motorkar;
  - (d) ‘n voertuig met pedale en met ‘n meganies/elektries aangedrewe eenheid as ‘n integrerende deel daarvan of daaraan vasgeheg en wat ontwerp of aangepas is om of deur middel van sodanige pedale of deur middel van die meganiese/elektriese eenheid of deur albei voortbeweeg te word; en
  - (e) ‘n ligte afleweringsvoertuig (‘n bakkie).

- 1.11 “**Sleepwa**” beteken ‘n voertuig wat nie selfaangedrewe is nie en wat ontwerp of aangepas is om deur ‘n motorvoertuig getrek te word, maar sluit nie ‘n syspan wat aan ‘n motorfiets vasgeheg is in nie.

## 2. KATEGORIEë VAN MOTORVOERTUIE

**Klas 1:           Ligte voertuie:**

Ligte voertuie is motorvoertuie, uitgesonderd swaar voertuie soos hierbo omskryf, met of sonder sleepwa, en sluit motorfietse, motordriewiele en motorkarre in.

**Klas 2:           Medium swaar voertuie:**

Medium swaar voertuie, is swaar voertuie, soos hierbo omskryf, met twee asse.

**Klas 3:           Groot swaar voertuie:**

Groot swaar voertuie, is swaar voertuie, soos hierbo omskryf, met drie of vier asse.

**Klas 4:           Ekstra groot swaar voertuie:**

Ekstra groot swaar voertuie, is swaar voertuie, soos hierbo omskryf, met vyf of meer asse.

**3. TOLTARIEF**

- 3.1 Die tolbedrae vir die verskillende kategorieë voertuie betaalbaar by die tolplazas geleë op die Hans Strydom Wisselaar (Pretoria) na die Gauteng / Mpumalanga Grens en Maputo Ontwikkeling Korridor Tolpaaie, vir die gebruik van 'n gedeelte van 'n tolpad (of enige deel daarvan), is uiteengesit in Tabel 1.

<b>ROETE</b>	<b>PLAZA</b>		<b>KLAS 1</b>	<b>KLAS 2</b>	<b>KLAS 3</b>	<b>KLAS 4</b>
N4	Donkerhoek	Op- en Afrit	R 17.00	R 24.00	R 34.00	R 66.00
N4	Cullinan	Op- en Afrit	R 21.00	R 34.00	R 51.00	R 86.00
N4	Diamond Hill	Hooflyn	R 51.00	R 70.00	R 133.00	R 220.00
N4	Valtaki	Op- en Afrit	R 39.00	R 55.00	R 81.00	R 183.00
N4	Ekandustria	Op- en Afrit	R 31.00	R 47.00	R 65.00	R 130.00
N4	Middelburg	Hooflyn	R 84.00	R 182.00	R 277.00	R 365.00
N4	Machado	Hooflyn	R 126.00	R 350.00	R 510.00	R 729.00
N4	Nkomazi	Hooflyn	R 95.00	R 193.00	R 281.00	R 405.00

**4. OPERASIONELE URE**

- 4.1 Die genoemde tolpad sal 24 uur per dag oop wees vir verkeer.

**5. INWERKINGTREDINGS DATUM**

- 5.1 Die datum en tyd vanaf die genoemde tolbedrae betaalbaar word, is 1 Maart 2026 om 00:00.

## DEPARTMENT OF TRANSPORT

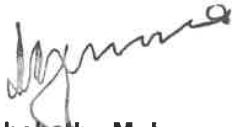
NO. 7097

5 February 2026

## THE SOUTH AFRICAN NATIONAL ROADS AGENCY SOC LIMITED

**NATIONAL ROUTES 1 AND 4: PLATINUM TOLL ROAD: PUBLICATION OF THE AMOUNTS OF TOLL FOR THE DIFFERENT CATEGORIES OF MOTOR VEHICLES, AND THE DATE AND TIME FROM WHICH THE TOLL TARIFFS SHALL BECOME PAYABLE**

The Head of the Department hereby, in terms of section 28(4) read with section 27(3) of The South African National Roads Agency Limited and National Roads Act, 1998 (Act No. 7 of 1998) [the Act], makes known that the amounts of toll to be levied in terms of section 28(2) of the Act at the toll plazas located on the Platinum Toll Road, and the date and time from which the amounts of toll shall become payable, have been determined by the Minister of Transport in terms of section 27(3)(a) of the Act, and that the said amounts shall be levied in terms of section 28(4) read with section 27 of the Act, as set out in the Schedule.



**Mr Mathabatha Mokonyama**  
**ACTING DIRECTOR-GENERAL: TRANSPORT**

## SCHEDULE

### 1. DEFINITIONS

The following words and expressions shall have the meanings stated, unless the context otherwise indicates.

- 1.1 “**Abnormal vehicle**” means a motor vehicle exceeding the legal dimensions as described in the Road Traffic Act, 1996 (Act No. 93 of 1996), as amended, or in any other law.
- 1.2 “**Axle**” means a device or set of devices, whether continuous across the width of the vehicle or not, about which the wheels of the vehicle rotate and which is so placed that, when the vehicle is travelling straight ahead, the vertical centre-lines of such wheels are in one vertical plane at right angles to the longitudinal centre-line of such vehicle. Axle shall also include an axle that is lifted and of which the wheels are not in contact with the road surface.
- 1.3 “**Heavy axle**” means an axle the wheels of which are fitted with tyres of a size (bead seat diameter) greater than 406,4 millimetres (16 inches), or an axle with more than two (2) wheels irrespective of tyre size, but excluding any axle of a motorcycle, a motor tricycle or a motor car.
- 1.4 “**Heavy vehicle**” means a motor vehicle with at least one heavy axle and/or any vehicle which is principally designed or adapted for the conveyance of persons exceeding sixteen (16) in number.
- 1.5 “**Light delivery vehicle**” means a motor vehicle designed or adapted for the conveyance of persons and freight with no heavy axle as defined in paragraph 1.3 above.
- 1.6 “**Light vehicle**” means a motor vehicle, other than a heavy vehicle.
- 1.7 “**Motor car**” means a motor vehicle, other than a motorcycle or a motor tricycle, designed or adapted solely or principally for the conveyance of persons not exceeding sixteen (16) in number, but excluding any vehicle with an axle with more than two (2) wheels irrespective of tyre size.
- 1.8 “**Motorcycle**” means a motor vehicle that has two wheels and includes any such vehicle having a side-car attached thereto.
- 1.9 “**Motor tricycle**” means a motor vehicle, other than a motorcycle with a side-car, which has three wheels and which is designed to be driven by means of the type of controls usually fitted to a motorcycle.
- 1.10 “**Motor vehicle**” means an entity comprising of one or more mechanically/electrically powered units with or without any trailer(s) physically joined by means of tow bars, tow ropes or mechanical articulation, and includes, inter alia:
  - (a) a motorcycle;
  - (b) a motor tricycle;
  - (c) a motor car;
  - (d) a vehicle which has pedals and a mechanically/electrically powered unit as an integral part thereof or attached thereto and which is designed or adapted to be propelled by means of either such pedals or such mechanical/electrical unit or both; and
  - (e) a light delivery vehicle (a bakkie).

- 1.11 **“Trailer”** means a vehicle which is not self-propelled and which is designed or adapted to be drawn by a motor vehicle but does not include a side-car attached to a motorcycle.

## 2. CATEGORIES OF MOTOR VEHICLES

**Class 1: *Light vehicles:***

Light vehicles are motor vehicles, other than heavy vehicles as defined above, with or without a trailer, and include motorcycles, motor tricycles and motor cars.

**Class 2: *Medium heavy vehicles:***

Medium heavy vehicles are heavy vehicles, as defined above, with two axles.

**Class 3: *Large heavy vehicles:***

Large heavy vehicles are heavy vehicles, as defined above, with three or four axles.

**Class 4: *Extra large heavy vehicles:***

Extra large heavy vehicles are heavy vehicles, as defined above, with five or more axles.

### 3. TOLL TARIFF

- 3.1 The amounts of toll for the different categories of motor vehicles payable at the toll plazas located on the Platinum Toll Road, for the usage of a section of toll road (or any part thereof), are stated in Table 1.

ROUTE	PLAZA	CLASS 1	CLASS 2	CLASS 3	CLASS 4
N1	Stormvoel Ramp Plaza	R 12.50	R 31.00	R 36.00	R 44.00
N1	Zambesi Ramp Plaza	R 15.00	R 38.00	R 44.00	R 53.00
N1	N1 Pumulani Main Line Plaza	R 16.50	R 41.00	R 47.00	R 57.00
N1	Wallmansthal Ramp Plaza	R 7.50	R 19.00	R 22.50	R 26.00
N1	Murrayhill Ramp Plaza	R 15.00	R 38.00	R 45.00	R 52.00
N1	Hammanskraal Ramp Plaza	R 35.00	R 120.00	R 130.00	R 150.00
N1	Carousel Main Line Plaza	R 75.00	R 202.00	R 224.00	R 258.00
N1	Maubane Ramp Plaza	R 33.00	R 88.00	R 97.00	R 112.00
N4	N4 Doornpoort Main Line Plaza	R 20.00	R 50.00	R 58.00	R 70.00
N4	K99 Ramp Plaza	R 20.00	R 50.00	R 58.00	R 70.00
N4	Brits Main Line Plaza	R 20.00	R 70.00	R 77.00	R 90.00
N4	Buffelspoort Ramp Plaza	R 20.00	R 48.00	R 54.00	R 64.00
N4	Marikana Main Line Plaza	R 30.00	R 72.00	R 81.00	R 96.00
N4	Kroondal Ramp Plaza	R 20.00	R 48.00	R 54.00	R 64.00
N4	Swartruggens Main Line Plaza*	R 103.00	R 258.00	R 313.00	R 368.00

### 4. OPERATIONAL HOURS

- 4.1 The said toll road shall be open to traffic for 24 hours a day.

### 5. EFFECTIVE DATE

- 5.1 The date and time from which the said amounts of toll shall become payable, shall be 1 March 2026 at 00:00.

## DEPARTEMENT VAN VERVOER

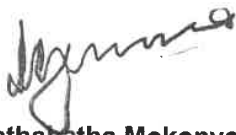
NO. 7097

5 Februarie 2026

## DIE SUID-AFRIKAANSE NASIONALE PADAGENTSKAP MSB BEPERK

**NASIONALE ROETES 1 EN 4: PLATINUM TOLPAD: PUBLISERING VAN DIE TOLBEDRAE VIR DIE VERSKILLENDE KATEGORIEë VAN MOTORVOERTUIE, EN DIE DATUM EN TYD VANAF DIE TOLBEDRAE BETAALBAAR WORD**

Die Hoof van die Departement maak hierby, kragtens die bepalings van artikel 28(4) saamgelees met artikel 27(3) van Die Suid-Afrikaanse Nasionale Padagentskap Beperk en Nasionale Paaie Wet, 1998 (Wet Nr. 7 van 1998) [die Wet], bekend dat die tolbedrae wat kragtens artikel 28(2) van die Wet gehef sal word by die tolplazas geleë op die Platinum Tolpad, en die datum en tyd vanaf die tolbedrae betaalbaar word, kragtens artikel 27(3)(a) van die Wet deur die Minister van Vervoer bepaal is, en dat genoemde bedrae kragtens artikel 28(4) saamgelees met artikel 27 van die Wet gehef sal word, soos in die Bylae uiteengesit.



**Mr Mathabatha Mokonyama**  
**WAARNEMENDE DIREKTEUR-GENERAAL: VERVOER**

## BYLAE

## 1. WOORDOMSKRYWINGS

Die volgende woorde en uitdrukkings sal die betekenis hê soos uiteengesit, tensy dit uit die samehang anders blyk.

- 1.1 **“Abnormale voertuig”** beteken ‘n motorvoertuig wat die wettige afmetings, soos beskryf in die Padverkeerswet, 1996 (Wet Nr. 93 van 1996), soos gewysig, of in enige ander wet oorskry.
- 1.2 **“As”** beteken ‘n toestel of stel toestelle, hetsy onafgebroke oor die breedte van die voertuig of nie, waarom die wiele van die voertuig ronddraai en wat so geplaas is dat wanneer die voertuig reguit vorentoe ry, die vertikale hartlyne van sodanige wiele in een vertikale vlak reghoekig met die langshartlyn van sodanige voertuig is. As sal ook ‘n as insluit waarvan die wiele opgelig en nie in kontak met die padoppervlak is nie.
- 1.3 **“Swaar as”** beteken ‘n as waarvan die wiele toegerus is met bande met ‘n grootte (spanranddeursnee) groter as 406,4 millimeter (16 duim), of ‘n as met meer as twee (2) wiele, ongeag die bandgrootte, maar nie ‘n as van ‘n motorfiets, ‘n motordriewiel of ‘n motorkar nie.
- 1.4 **“Swaar voertuig”** beteken ‘n motorvoertuig met minstens een swaar as en/of ‘n motorvoertuig wat ontwerp of aangepas is uitsluitlik of hoofsaaklik vir die vervoer van meer as sestien (16) persone.
- 1.5 **“Ligte afleweringvoertuig”** beteken ‘n motorvoertuig wat ontwerp of aangepas is vir die vervoer van persone en vrag met geen swaar as soos omskryf in paragraaf 1.3 hierbo nie.
- 1.6 **“Ligte voertuig”** beteken ‘n motorvoertuig, uitgesonderd ‘n swaar voertuig.
- 1.7 **“Motorkar”** beteken ‘n motorvoertuig, uitgesonderd ‘n motorfiets of motordriewiel, wat ontwerp of aangepas is uitsluitlik of hoofsaaklik vir die vervoer van hoogstens sestien (16) persone, maar uitgesluit enige voertuig met meer as twee (2) wiele, ongeag die bandgrootte, op enige as.
- 1.8 **“Motorfiets”** beteken ‘n motorvoertuig met twee wiele en ook enige sodanige voertuig waaraan ‘n syspan geheg is.
- 1.9 **“Motordriewiel”** beteken ‘n motorvoertuig, uitgesonderd ‘n motorfiets met syspan, wat drie wiele het en ontwerp is om bestuur te word deur middel van die tipe kontroles waarmee ‘n motorfiets gewoonlik toegerus is.
- 1.10 **“Motorvoertuig”** beteken ‘n entiteit bestaande uit een of meer meganies/elektries aangedrewe eenhede met of sonder sleepwa of sleepwaens wat fisies aan mekaar gekoppel is deur middel van sleepstange, sleeptoue of meganiese geleiding en sluit onder andere in:
  - (a) ‘n motorfiets;
  - (b) ‘n motordriewiel;
  - (c) ‘n motorkar;
  - (d) ‘n voertuig met pedale en met ‘n meganies/elektries aangedrewe eenheid as ‘n integrerende deel daarvan of daaraan vasgeheg en wat ontwerp of aangepas is om of deur middel van sodanige pedale of deur middel van die meganiese/elektriese eenheid of deur albei voortbeweeg te word; en
  - (e) ‘n ligte afleweringvoertuig (‘n bakkie).

- 1.11 “**Sleepwa**” beteken ‘n voertuig wat nie selfaangedrewe is nie en wat ontwerp of aangepas is om deur ‘n motorvoertuig getrek te word, maar sluit nie ‘n syspan wat aan ‘n motorfiets vasgeheg is in nie.

## 2. KATEGORIEë VAN MOTORVOERTUIE

**Klas 1:           Ligte voertuie:**

Ligte voertuie is motorvoertuie, uitgesonderd swaar voertuie soos hierbo omskryf, met of sonder sleepwa, en sluit motorfietse, motordriewiele en motorkarre in.

**Klas 2:           Medium swaar voertuie:**

Medium swaar voertuie, is swaar voertuie, soos hierbo omskryf, met twee asse.

**Klas 3:           Groot swaar voertuie:**

Groot swaar voertuie, is swaar voertuie, soos hierbo omskryf, met drie of vier asse.

**Klas 4:           Ekstra groot swaar voertuie:**

Ekstra groot swaar voertuie, is swaar voertuie, soos hierbo omskryf, met vyf of meer asse.

### 3. TOLTARIEF

- 3.1 Die tolbedrae vir die verskillende kategorieë voertuie betaalbaar by die tolplazas geleë op die Platinum TolPad, vir die gebruik van 'n gedeelte van 'n tolpad (of enige deel daarvan), is uiteengesit in Tabel 1.

TABEL 1: TOL TARIEF (15% BTW INGESLUIT)						
ROETE	PLAZA		KLAS 1	KLAS 2	KLAS 3	KLAS 4
N1	Stormvoël	Op- en Afrit	R 12.50	R 31.00	R 36.00	R 44.00
N1	Zambesi	Op- en Afrit	R 15.00	R 38.00	R 44.00	R 53.00
N1	Pumulani	Hooflyn	R 16.50	R 41.00	R 47.00	R 57.00
N1	Wallmansthal	Op- en Afrit	R 7.50	R 19.00	R 22.50	R 26.00
N1	Murrayhill	Op- en Afrit	R 15.00	R 38.00	R 45.00	R 52.00
N1	Hammanskraal	Op- en Afrit	R 35.00	R 120.00	R 130.00	R 150.00
N1	Carousel	Hooflyn	R 75.00	R 202.00	R 224.00	R 258.00
N1	Maubane	Op- en Afrit	R 33.00	R 88.00	R 97.00	R 112.00
N4	Doornpoort	Hooflyn	R 20.00	R 50.00	R 58.00	R 70.00
N4	K99	Op- en Afrit	R 20.00	R 50.00	R 58.00	R 70.00
N4	Brits	Hooflyn	R 20.00	R 70.00	R 77.00	R 90.00
N4	Buffelspoort	Op- en Afrit	R 20.00	R 48.00	R 54.00	R 64.00
N4	Marikana	Hooflyn	R 30.00	R 72.00	R 81.00	R 96.00
N4	Kroondal	Op- en Afrit	R 20.00	R 48.00	R 54.00	R 64.00
N4	Swartruggens	Hooflyn	R 103.00	R 258.00	R 313.00	R 368.00

### 4. OPERASIONELE URE

- 4.1 Die genoemde tolpad sal 24 uur per dag oop wees vir verkeer.

### 5. INWERKINGTREDINGS DATUM

- 5.1 Die datum en tyd vanaf die genoemde tolbedrae betaalbaar word, is 1 Maart 2026 om 00:00.

**DEPARTMENT OF TRANSPORT**

NO. 7098

5 February 2026

**THE SOUTH AFRICAN NATIONAL ROADS AGENCY SOC LIMITED****NATIONAL ROUTE 3: CEDARA TO HEIDELBERG GAUTENG TOLL ROAD:  
PUBLICATION OF THE AMOUNTS OF TOLL FOR THE DIFFERENT CATEGORIES OF  
MOTOR VEHICLES, AND THE DATE AND TIME FROM WHICH THE TOLL TARIFFS  
SHALL BECOME PAYABLE**

The Head of the Department hereby, in terms of section 28(4) read with section 27(3) of The South African National Roads Agency Limited and National Roads Act, 1998 (Act No. 7 of 1998) [the Act], makes known that the amounts of toll to be levied in terms of section 28(2) of the Act at the toll plazas located on the Cedara to Heidelberg Gauteng Toll Road, and the date and time from which the amounts of toll shall become payable, have been determined by the Minister of Transport in terms of section 27(3)(a) of the Act, and that the said amounts shall be levied in terms of section 28(4) read with section 27 of the Act, as set out in the Schedule.



**Mr Mathabatha Mokonyama**  
**ACTING DIRECTOR-GENERAL: TRANSPORT**

## SCHEDULE

### 1. DEFINITIONS

The following words and expressions shall have the meanings stated, unless the context otherwise indicates.

- 1.1 “**Abnormal vehicle**” means a motor vehicle exceeding the legal dimensions as described in the Road Traffic Act, 1996 (Act No. 93 of 1996), as amended, or in any other law.
- 1.2 “**Axle**” means a device or set of devices, whether continuous across the width of the vehicle or not, about which the wheels of the vehicle rotate and which is so placed that, when the vehicle is travelling straight ahead, the vertical centre-lines of such wheels are in one vertical plane at right angles to the longitudinal centre-line of such vehicle. Axle shall also include an axle that is lifted and of which the wheels are not in contact with the road surface.
- 1.3 “**Heavy axle**” means an axle the wheels of which are fitted with tyres of a size (bead seat diameter) greater than 406,4 millimetres (16 inches), or an axle with more than two (2) wheels irrespective of tyre size, but excluding any axle of a motorcycle, a motor tricycle or a motor car.
- 1.4 “**Heavy vehicle**” means a motor vehicle with at least one heavy axle and/or any vehicle which is principally designed or adapted for the conveyance of persons exceeding sixteen (16) in number.
- 1.5 “**Light delivery vehicle**” means a motor vehicle designed or adapted for the conveyance of persons and freight with no heavy axle as defined in paragraph 1.3 above.
- 1.6 “**Light vehicle**” means a motor vehicle, other than a heavy vehicle.
- 1.7 “**Motor car**” means a motor vehicle, other than a motorcycle or a motor tricycle, designed or adapted solely or principally for the conveyance of persons not exceeding sixteen (16) in number, but excluding any vehicle with an axle with more than two (2) wheels irrespective of tyre size.
- 1.8 “**Motorcycle**” means a motor vehicle that has two wheels and includes any such vehicle having a side-car attached thereto.
- 1.9 “**Motor tricycle**” means a motor vehicle, other than a motorcycle with a side-car, which has three wheels and which is designed to be driven by means of the type of controls usually fitted to a motorcycle.
- 1.10 “**Motor vehicle**” means an entity comprising of one or more mechanically/electrically powered units with or without any trailer(s) physically joined by means of tow bars, tow ropes or mechanical articulation, and includes, inter alia:
  - (a) a motorcycle;
  - (b) a motor tricycle;
  - (c) a motor car;
  - (d) a vehicle which has pedals and a mechanically/electrically powered unit as an integral part thereof or attached thereto and which is designed or adapted to be propelled by means of either such pedals or such mechanical/electrical unit or both; and
  - (e) a light delivery vehicle (a bakkie).

- 1.11 **“Trailer”** means a vehicle which is not self-propelled and which is designed or adapted to be drawn by a motor vehicle but does not include a side-car attached to a motorcycle.

## 2. CATEGORIES OF MOTOR VEHICLES

**Class 1: *Light vehicles:***

Light vehicles are motor vehicles, other than heavy vehicles as defined above, with or without a trailer, and include motorcycles, motor tricycles and motor cars.

**Class 2: *Medium heavy vehicles:***

Medium heavy vehicles are heavy vehicles, as defined above, with two axles.

**Class 3: *Large heavy vehicles:***

Large heavy vehicles are heavy vehicles, as defined above, with three or four axles.

**Class 4: *Extra large heavy vehicles:***

Extra large heavy vehicles are heavy vehicles, as defined above, with five or more axles.

### 3. TOLL TARIFF

- 3.1 The amounts of toll for the different categories of motor vehicles payable at the toll plazas located on the Cedara to Heidelberg Gauteng Toll Road, for the usage of a section of toll road (or any part thereof), are stated in Table 1.

<b>ROUTE</b>	<b>PLAZA</b>		<b>CLASS 1</b>	<b>CLASS 2</b>	<b>CLASS 3</b>	<b>CLASS 4</b>
N3	Mooi	Mainline	R 70.00	R 171.00	R 240.00	R 324.00
N3		Ramp (S)	R 49.00	R 119.00	R 168.00	R 227.00
N3		Ramp (N)	R 21.00	R 51.00	R 72.00	R 97.00
N3	Treverton	Ramp	R 21.00	R 51.00	R 72.00	R 97.00
N3	Bergville	Ramp	R 30.00	R 35.00	R 65.00	R 100.00
N3	Tugela	Mainline	R 100.00	R 165.00	R 260.00	R 359.00
N3	Tugela East	Ramp	R 62.00	R 102.00	R 152.00	R 211.00
N3	Wilge	Mainline	R 94.00	R 161.00	R 215.00	R 304.00
N3	De Hoek	Mainline	R 67.00	R 105.00	R 160.00	R 230.00

### 4. OPERATIONAL HOURS

- 4.1 The said toll road shall be open to traffic for 24 hours a day.

### 5. EFFECTIVE DATE

- 5.1 The date and time from which the said amounts of toll shall become payable, shall be 1 March 2026 at 00:00.

## DEPARTEMENT VAN VERVOER

NO. 7098

5 Februarie 2026

## DIE SUID-AFRIKAANSE NASIONALE PADAGENTSAP MSB BEPERK

**NASIONALE ROETE 3: CEDARA TOT HEIDELBERG GAUTENG TOLPAD: PUBLISERING VAN DIE TOLBEDRAE VIR DIE VERSKILLENDE KATEGORIEë VAN MOTORVOERTUIE, EN DIE DATUM EN TYD VANAF DIE TOLBEDRAE BETAALBAAR WORD**

Die Hoof van die Departement maak hierby, kragtens die bepalings van artikel 28(4) saamgelees met artikel 27(3) van Die Suid-Afrikaanse Nasionale Padagentskap Beperk en Nasionale Paaie Wet, 1998 (Wet Nr. 7 van 1998) [die Wet], bekend dat die tolbedrae wat kragtens artikel 28(2) van die Wet gehef sal word by die tolplazas geleë op die Cedara tot Heidelberg Gauteng Tolpad, en die datum en tyd vanaf die tolbedrae betaalbaar word, kragtens artikel 27(3)(a) van die Wet deur die Minister van Vervoer bepaal is, en dat genoemde bedrae kragtens artikel 28(4) saamgelees met artikel 27 van die Wet gehef sal word, soos in die Bylae uiteengesit.



**Mr Mathabatha Mokonyama**  
**WAARNEMENDE DIREKTEUR-GENERAAL: VERVOER**

**BYLAE****1. WOORDOMSKRYWINGS**

Die volgende woorde en uitdrukkings sal die betekenisse hê soos uiteengesit, tensy dit uit die samehang anders blyk.

- 1.1 “**Abnormale voertuig**” beteken ‘n motorvoertuig wat die wettige afmetings, soos beskryf in die Padverkeerswet, 1996 (Wet Nr. 93 van 1996), soos gewysig, of in enige ander wet oorskry.
- 1.2 “**As**” beteken ‘n toestel of stel toestelle, hetsy onafgebroke oor die breedte van die voertuig of nie, waarom die wiele van die voertuig ronddraai en wat so geplaas is dat wanneer die voertuig reguit vorentoe ry, die vertikale hartlyne van sodanige wiele in een vertikale vlak reghoekig met die langshartlyn van sodanige voertuig is. As sal ook ‘n as insluit waarvan die wiele opgelig en nie in kontak met die padoppervlak is nie.
- 1.3 “**Swaar as**” beteken ‘n as waarvan die wiele toegerus is met bande met ‘n grootte (spanranddeursnee) groter as 406,4 millimeter (16 duim), of ‘n as met meer as twee (2) wiele, ongeag die bandgrootte, maar nie ‘n as van ‘n motorfiets, ‘n motordriewiel of ‘n motorkar nie.
- 1.4 “**Swaar voertuig**” beteken ‘n motorvoertuig met minstens een swaar as en/of ‘n motorvoertuig wat ontwerp of aangepas is uitsluitlik of hoofsaaklik vir die vervoer van meer as sestien (16) persone.
- 1.5 “**Ligte afleweringvoertuig**” beteken ‘n motorvoertuig wat ontwerp of aangepas is vir die vervoer van persone en vrag met geen swaar as soos omskryf in paragraaf 1.3 hierbo nie.
- 1.6 “**Ligte voertuig**” beteken ‘n motorvoertuig, uitgesonderd ‘n swaar voertuig.
- 1.7 “**Motorkar**” beteken ‘n motorvoertuig, uitgesonderd ‘n motorfiets of motordriewiel, wat ontwerp of aangepas is uitsluitlik of hoofsaaklik vir die vervoer van hoogstens sestien (16) persone, maar uitgesluit enige voertuig met meer as twee (2) wiele, ongeag die bandgrootte, op enige as.
- 1.8 “**Motorfiets**” beteken ‘n motorvoertuig met twee wiele en ook enige sodanige voertuig waaraan ‘n syspan geheg is.
- 1.9 “**Motordriewiel**” beteken ‘n motorvoertuig, uitgesonderd ‘n motorfiets met syspan, wat drie wiele het en ontwerp is om bestuur te word deur middel van die tipe kontroles waarmee ‘n motorfiets gewoonlik toegerus is.
- 1.10 “**Motorvoertuig**” beteken ‘n entiteit bestaande uit een of meer meganies/elektries aangedrewe eenhede met of sonder sleepwa of sleepwaens wat fisies aan mekaar gekoppel is deur middel van sleepstange, sleeptoue of meganiese geleiding en sluit onder andere in:
  - (a) ‘n motorfiets;
  - (b) ‘n motordriewiel;
  - (c) ‘n motorkar;
  - (d) ‘n voertuig met pedale en met ‘n meganies/elektries aangedrewe eenheid as ‘n integrerende deel daarvan of daaraan vasgeheg en wat ontwerp of aangepas is om of deur middel van sodanige pedale of deur middel van die meganiese/elektriese eenheid of deur albei voortbeweeg te word; en
  - (e) ‘n ligte afleweringvoertuig (‘n bakkie).

- 1.11 “**Sleepwa**” beteken ‘n voertuig wat nie selfaangedrewe is nie en wat ontwerp of aangepas is om deur ‘n motorvoertuig getrek te word, maar sluit nie ‘n syspan wat aan ‘n motorfiets vasgeheg is in nie.

## 2. KATEGORIEË VAN MOTORVOERTUIE

**Klas 1:           Ligte voertuie:**

Ligte voertuie is motorvoertuie, uitgesonderd swaar voertuie soos hierbo omskryf, met of sonder sleepwa, en sluit motorfietse, motordriewiele en motorkarre in.

**Klas 2:           Medium swaar voertuie:**

Medium swaar voertuie, is swaar voertuie, soos hierbo omskryf, met twee asse.

**Klas 3:           Groot swaar voertuie:**

Groot swaar voertuie, is swaar voertuie, soos hierbo omskryf, met drie of vier asse.

**Klas 4:           Ekstra groot swaar voertuie:**

Ekstra groot swaar voertuie, is swaar voertuie, soos hierbo omskryf, met vyf of meer asse.

### 3. TOLTARIEF

- 3.1 Die tolbedrae vir die verskillende kategorieë voertuie betaalbaar by die tolplazas geleë op die Cedara tot Heidelberg Gauteng Tolpad, vir die gebruik van 'n gedeelte van 'n tolpad (of enige deel daarvan), is uiteengesit in Tabel 1.

<b>TABEL 1: TOLTARIEF (15% BTW INGESLUIT)</b>						
<b>ROETE</b>	<b>PLAZA</b>		<b>KLAS 1</b>	<b>KLAS 2</b>	<b>KLAS 3</b>	<b>KLAS 4</b>
N3	Mooi	Hooflyn	R 70.00	R 171.00	R 240.00	R 324.00
N3		Op- en Afrit (S)	R 49.00	R 119.00	R 168.00	R 227.00
N3		Op- en Afrit (N)	R 21.00	R 51.00	R 72.00	R 97.00
N3	Treverton	Op-en Afrit	R 21.00	R 51.00	R 72.00	R 97.00
N3	Bergville	Op- en Afrit	R 30.00	R 35.00	R 65.00	R 100.00
N3	Tugela	Hooflyn	R 100.00	R 165.00	R 260.00	R 359.00
N3	Tugela Oos	Op-en Afrit	R 62.00	R 102.00	R 152.00	R 211.00
N3	Wilge	Hooflyn	R 94.00	R 161.00	R 215.00	R 304.00
N3	De Hoek	Hooflyn	R 67.00	R 105.00	R 160.00	R 230.00

### 4. OPERASIONELE URE

- 4.1 Die genoemde tolpad sal 24 uur per dag oop wees vir verkeer.

### 5. INWERKINGTREDINGS DATUM

- 5.1 Die datum en tyd vanaf die genoemde tolbedrae betaalbaar word, is 1 Maart 2026 om 00:00.



Printed by and obtainable from the Government Printer, Bosman Street, Private Bag X85, Pretoria, 0001  
Contact Centre Tel: 012-748 6200. eMail: [info.egazette@gpw.gov.za](mailto:info.egazette@gpw.gov.za)  
Publications: Tel: (012) 748 6053, 748 6061, 748 6065



# Government Gazette Staatskoerant

REPUBLIC OF SOUTH AFRICA  
REPUBLIEK VAN SUID AFRIKA

Vol. 728

5

February  
Februarie 2026

No. 54088

N.B. The Government Printing Works will not be held responsible for the quality of "Hard Copies" or "Electronic Files" submitted for publication purposes

ISSN 1682-5845



**AIDS HELPLINE: 0800-0123-22 Prevention is the cure**

**IMPORTANT NOTICE:**

**THE GOVERNMENT PRINTING WORKS WILL NOT BE HELD RESPONSIBLE FOR ANY ERRORS THAT MIGHT OCCUR DUE TO THE SUBMISSION OF INCOMPLETE / INCORRECT / ILLEGIBLE COPY.**

**No FUTURE QUERIES WILL BE HANDLED IN CONNECTION WITH THE ABOVE.**

**Contents**

<i>No.</i>		<i>Gazette No.</i>	<i>Page No.</i>
<b>GOVERNMENT NOTICES • GOEWERMENTSKENNISGEWINGS</b>			
<b>Transport, Department of / Vervoer, Departement van</b>			
7099	The South African National Roads Agency Limited and National Roads Act, 1998 (Act No. 7 of 1998): Publication of the amounts of Toll for the different categories of motor vehicles, and the date and time from which the toll tariffs shall become payable .....	54088	3
7099	Die Suid-Afrikaanse Nasionale Padagentskap Beperk en Nasionale Paaie Wet, 1998 (Wet Nr. 7 van 1998): Publikering van die tolbedrae vir die verskillende kategorieë van motorvoertuie, en die datum en tyd vanaf die tolbedrae betaalbaar word .....	54088	19

---

**GOVERNMENT NOTICES • GOEWERMENTSKENNISGEWINGS**

---

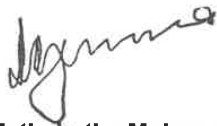
**DEPARTMENT OF TRANSPORT**

NO. 7099

5 February 2026

**THE SOUTH AFRICAN NATIONAL ROADS AGENCY SOC LIMITED****HUGUENOT, VAAL RIVER, GREAT NORTH, TSITSIKAMMA, SOUTH COAST, NORTH COAST, MARIANHILL, MAGALIES, N17 AND R30/R730/R34 TOLL ROADS: PUBLICATION OF THE AMOUNTS OF TOLL FOR THE DIFFERENT CATEGORIES OF MOTOR VEHICLES, AND THE DATE AND TIME FROM WHICH THE TOLL TARIFFS SHALL BECOME PAYABLE**

The Head of the Department hereby, in terms of section 28(4) read with section 27(3) of The South African National Roads Agency Limited and National Roads Act, 1998 (Act No. 7 of 1998) [the Act], makes known that the amounts of toll to be levied in terms of section 27(1)(b) of the Act at the toll plazas located on the Huguenot, Vaal River, Great North, Tsitsikamma, South Coast, North Coast, Mariannhill, Magalies, N17 and R30/R730/R34 Toll Roads, and the date and time from which the amounts of toll shall become payable, have been determined by the Minister of Transport in terms of section 27(3)(a) of the Act, and that the said amounts shall be levied in terms of section 27(3)(b) and (d) of the Act, as set out in the Schedule.



**Mr Mathabatha Mokonyama**  
**ACTING DIRECTOR-GENERAL: TRANSPORT**

**SCHEDULE****1. DEFINITIONS**

The following words and expressions shall have the meanings stated, unless the context otherwise indicates.

- 1.1 **“Abnormal vehicle”** means a motor vehicle exceeding the legal dimensions as described in the Road Traffic Act, 1996 (Act No. 93 of 1996), as amended, or in any other law.
- 1.2 **“Axle”** means a device or set of devices, whether continuous across the width of the vehicle or not, about which the wheels of the vehicle rotate and which is so placed that, when the vehicle is travelling straight ahead, the vertical centre-lines of such wheels are in one vertical plane at right angles to the longitudinal centre-line of such vehicle. Axle shall also include an axle that is lifted and of which the wheels are not in contact with the road surface.
- 1.3 **“Heavy axle”** means an axle the wheels of which are fitted with tyres of a size (bead seat diameter) greater than 406,4 millimetres (16 inches), or an axle with more than two (2) wheels irrespective of tyre size, but excluding any axle of a motorcycle, a motor tricycle or a motor car.
- 1.4 **“Heavy vehicle”** means a motor vehicle with at least one heavy axle and/or any vehicle which is principally designed or adapted for the conveyance of persons exceeding sixteen (16) in number.
- 1.5 **“Light delivery vehicle”** means a motor vehicle designed or adapted for the conveyance of persons and freight with no heavy axle as defined in paragraph 1.3 above.
- 1.6 **“Light vehicle”** means a motor vehicle, other than a heavy vehicle.
- 1.7 **“Motor car”** means a motor vehicle, other than a motorcycle or a motor tricycle, designed or adapted solely or principally for the conveyance of persons not exceeding sixteen (16) in number, but excluding any vehicle with an axle with more than two (2) wheels irrespective of tyre size.
- 1.8 **“Motorcycle”** means a motor vehicle that has two wheels and includes any such vehicle having a side-car attached thereto.
- 1.9 **“Motor tricycle”** means a motor vehicle, other than a motorcycle with a side-car, which has three wheels and which is designed to be driven by means of the type of controls usually fitted to a motorcycle.
- 1.10 **“Motor vehicle”** means an entity comprising of one or more mechanically/electrically powered units with or without any trailer(s) physically joined by means of tow bars, tow ropes or mechanical articulation, and includes, inter alia:
- (a) a motorcycle;
  - (b) a motor tricycle;
  - (c) a motor car;
  - (d) a vehicle which has pedals and a mechanically/electrically powered unit as an integral part thereof or attached thereto and which is designed or adapted to be propelled by means of either such pedals or such mechanical/electrical unit or both; and
  - (e) a light delivery vehicle (a bakkie).

- 1.11 “Trailer” means a vehicle which is not self-propelled and which is designed or adapted to be drawn by a motor vehicle but does not include a side-car attached to a motorcycle.

## 2. CATEGORIES OF MOTOR VEHICLES

**Class 1: *Light vehicles:***

Light vehicles are motor vehicles, other than heavy vehicles as defined above, with or without a trailer, and include motorcycles, motor tricycles and motor cars.

**Class 2: *Medium heavy vehicles:***

Medium heavy vehicles are heavy vehicles, as defined above, with two axles.

**Class 3: *Large heavy vehicles:***

Large heavy vehicles are heavy vehicles, as defined above, with three or four axles.

**Class 4: *Extra large heavy vehicles:***

Extra large heavy vehicles are heavy vehicles, as defined above, with five or more axles.

### 3. TOLL TARIFF

- 3.1 The amounts of toll for the different categories of motor vehicles, payable at the toll plazas located on the Huguenot, Vaal River, Great North, Tsitsikamma, South Coast, North Coast, Mariannhill, Magalies, N17 and R30/R730/R34 Toll Roads, for the usage of the toll road, or any part thereof, are stated in Table 1.

TABLE 1: TOLL TARIFF (INCL 15% VAT)						
TOLL ROAD	PLAZA		CLASS 1	CLASS 2	CLASS 3	CLASS 4
N1 Huguenot	Huguenot	Mainline	R54.50	R151.00	R236.00	R383.00
N1 Vaal River	Verkeerdevlei	Mainline	R78.50	R157.00	R236.00	R331.00
	Vaal	Mainline	R91.50	R172.00	R207.00	R275.00
	Grasmere	Mainline	R27.50	R82.00	R96.00	R126.00
		Ramp (S)	R14.00	R41.00	R48.00	R63.00
		Ramp (N)	R14.00	R41.00	R48.00	R63.00
N1 Great North	Kranskop	Mainline	R61.50	R157.00	R210.00	R257.00
		Ramp	R17.00	R46.00	R54.00	R81.00
	Nyl	Mainline	R79.50	R149.00	R180.00	R241.00
		Ramp	R24.50	R46.00	R54.00	R69.00
	Sebetiela	Ramp	R24.50	R46.00	R58.00	R77.00
	Capricorn	Mainline	R63.50	R175.00	R205.00	R256.00
N2 Tsitsikamma	Baobab	Mainline	R61.50	R168.00	R231.00	R278.00
	Tsitsikamma	Mainline	R73.00	R183.00	R438.00	R619.00
N2 South Coast		Ramp	R73.00	R183.00	R438.00	R619.00
	Izotsha	Ramp	R12.50	R23.00	R31.00	R54.00
	Oribi	Mainline	R41.00	R73.00	R100.00	R162.00
		Ramp (S)	R18.50	R34.00	R46.00	R73.00
		Ramp (N)	R22.00	R38.00	R54.00	R100.00
N2 North Coast	Umtentweni	Ramp	R17.50	R31.00	R42.00	R69.00
	King Shaka IA	Ramp	R8.50	R17.00	R26.00	R34.00
	oThongathi	Mainline	R15.50	R32.00	R42.00	R62.00
		Ramp (S)	R7.50	R17.00	R21.00	R31.00
		Ramp (N)	R7.50	R17.00	R21.00	R31.00
	Mvoti	Mainline	R18.50	R52.00	R70.00	R104.00
	Mandini	Ramp	R10.00	R19.00	R23.00	R31.00
	Dokodweni	Ramp	R27.00	R53.00	R62.00	R84.00
	Mtunzini	Mainline	R63.50	R122.00	R146.00	R217.00
		Ramp (S)	R53.00	R99.00	R119.00	R172.00
	Ramp (N)	R11.50	R23.00	R27.00	R45.00	
N3 Mariannhill	Mariannhill	Mainline	R16.50	R30.00	R37.00	R57.00
N4 Magalies	Pelindaba	Mainline	R8.00	R15.00	R21.00	R27.00
	Quagga	Mainline	R6.50	R11.00	R16.00	R21.00
N17	Gosforth	Mainline	R17.00	R46.00	R50.00	R69.00
		Ramp (W)	R9.50	R19.00	R25.00	R33.00
		Ramp (E)	R7.50	R29.00	R31.00	R42.00
	Dalpark	Mainline	R15.50	R32.00	R42.00	R58.00
	Denne	Ramp	R13.50	R27.00	R35.00	R46.00
	Leandra	Mainline	R50.50	R127.00	R190.00	R253.00
		Ramp	R30.50	R77.00	R113.00	R152.00
	Trichardt	Mainline	R25.00	R63.00	R96.00	R127.00
	Ermelo	Mainline	R45.00	R114.00	R170.00	R226.00
	R30/R730/R34	Brandfort	Mainline	R62.50	R125.00	R188.00

#### 4. LOCAL USER TOLL TARIFF

- 4.1 A local user toll tariff, for different categories of motor vehicles, is granted, subject to the South African National Roads Agency SOC Limited's (SANRAL) terms and conditions (available at the Toll Plazas), to registered *bona fide* residents, employers or employees, located within an approved local user area, on successful application to the appropriate toll operator.
- 4.2 The local user toll tariffs for the local user areas, as shown on the various maps attached to this Notice and of which a copy can be obtained from SANRAL, for the different categories of motor vehicles, payable at the Verkeerdevlei, Grasmere, Capricorn, Baobab, Tsitsikamma, Leandra, Trichardt, Ermelo and Brandfort Toll Plazas, located on the Vaal River, Great North, Tsitsikamma, N17 and R30/R730/R34 Toll Roads are stated in Table 2.

TABLE 2: LOCAL USER TOLL TARIFF - TYPE A (INCL 15% VAT)						
TOLL ROAD	PLAZA	LOCAL USER AREA	CLASS 1	CLASS 2	CLASS 3	CLASS 4
N1 Vaal River	Verkeerdevlei Mainline	Verkeerdevlei	R25.00	R50.00	R75.00	R100.00
	Grasmere Mainline	Evaton Sebokeng Vanderbijlpark	R4.50			
	Ramp (S)	Ennerdale Lenasia South	R2.50			
	Ramp (N)	Ennerdale Lenasia North	R2.50			
N1 Great North	Capricorn Mainline	Capricorn	R19.50	R39.00	R47.00	R67.00
	Baobab Mainline	Baobab	R22.50	R55.00	R75.00	R96.00
	Baobab Mainline	Tshipise	R32.50	R81.00	R114.00	R146.00
N2 Tsitsikamma	Tsitsikamma Mainline	Tsitsikamma	R23.00			
	Ramp Mainline Ramp	Nature's Valley Coldsream	R11.50			
N17	Leandra Mainline	Leandra	R32.00	R80.00	R120.00	R160.00
	Ramp	Leandra	R19.00	R49.00	R71.00	R96.00
	Trichardt Mainline	Trichardt	R13.50	R33.00	R50.00	R67.00
	Ermelo Mainline	Ermelo	R24.00	R62.00	R89.00	R119.00
R30/R730/ R34	Brandfort Mainline	Area A	R6.50	R13.00	R20.00	R28.00
		Area B	R13.00	R26.00	R40.00	R56.00
		Area C	R26.50	R53.00	R79.00	R112.00

- 4.3 The local user toll tariffs for the local user area, for the different categories of motor vehicles, payable at the Mvoti Toll Plaza located on the North Coast Toll Road are stated in Table 3.

<b>TABLE 3: LOCAL USER TOLL TARIFF - TYPE B (INCL 15% VAT)</b>							
TOLL ROAD	PLAZA		LOCAL USER AREA	CLASS 1	CLASS 2	CLASS 3	CLASS 4
N2 North Coast	Mvoti	Mainline	KwaDukzuza	R6.00	R14.00	R20.00	R28.00
N2 North Coast	Dokodweni	Ramp	Mandeni Local Municipality wards 1, 2, 3, 8 and 9	R4.00	R8.50	R9.50	R13.00

## 5. LOCAL PUBLIC TRANSPORT OPERATOR TOLL TARIFF

- 5.1 A local public transport operator toll tariff, for Class 1 motor vehicles only, is granted, subject to SANRAL's terms and conditions (available at the Toll Plazas), to registered *bona fide* local public transport operators operating within an approved local user area, on successful application to the appropriate toll operator.
- 5.2 The local public transport operator toll tariffs for the local user areas, as shown on the various maps attached to this Notice and of which a copy can be obtained from SANRAL, for Class 1 motor vehicles only, payable at the Verkeerdevlei, Capricorn, Baobab and Brandfort Toll Plazas located on the Vaal River, Great North and R30/R730/R34 Toll Roads, are stated in Table 4.

TABLE 4: LOCAL PUBLIC TRANSPORT OPERATOR TOLL TARIFF (INCL 15% VAT)				
TOLL ROAD	PLAZA		LOCAL USER AREA	CLASS 1
N1 Vaal River	Verkeerdevlei	Mainline	Verkeerdevlei	R25.00
N1 Great North	Capricorn	Mainline	Capricorn	R19.50
	Baobab	Mainline	Baobab	R20.50
R30/R730/R34	Brandfort	Mainline	Areas A, B & C	R12.50

## 6. FREQUENT USER DISCOUNT

- 6.1 At specified toll plazas, a frequent user discount on the toll tariff, for Class 1 motor vehicles only, is granted, subject to SANRAL's terms and conditions (available at the Toll Plazas), to registered frequent users who complete a prescribed number of passages within a stipulated period, on successful application to the appropriate toll operator. At some of the specified toll plazas, a registered *bona fide* local user and registered *bona fide* local public transport operator may also register as a frequent user. The frequent user discount, according to the number of passages completed within the stipulated period, is either applied to the value of the total number of passages, or to the specific range of trips.
- 6.2 The frequent user discounts for the specified toll plazas located on the Huguenot, Vaal River, Great North, South Coast, North Coast, Mariannhill, Magalies, N17 and R30/R730/R34 Toll Roads, for Class 1 motor vehicles only, for the number of passages completed within the stipulated period, on the toll tariffs stated in the relevant tables, are stated in Tables 5.1 and 5.2.

TOLL ROAD	PLAZA		CALENDAR MONTH	DISCOUNT FOR THE NO. OF PASSAGES		TOLL TARIFF TABLE
				20%*	40%*	
N1 Huguenot	Huguenot	Mainline	1	20 to 39	40 and more	1
N1 Vaal River	Verkeerdevlei	Mainline	1	20 to 39	40 and more	1, 2 and 4
	Grasmere	Mainline	1	20 to 39	40 and more	1
N1 Great North	Capricorn	Mainline	1	20 to 39	40 and more	1, 2 and 4
	Baobab	Mainline	1	20 to 39	40 and more	1, 2 and 4
N2 South Coast	Izotsha	Ramp	3	20 to 39	40 and more	1
	Oribi	Mainline	3	20 to 39	40 and more	1
		Ramp (S)	3	20 to 39	40 and more	1
		Ramp (N)	3	20 to 39	40 and more	1
	Umtentweni	Ramp	3	20 to 39	40 and more	1
N2 North Coast	King Shaka Airport	Ramp	1	10 to 19	20 and more	1
	oThongathi	Mainline	1	20 to 39	40 and more	1
		Ramp (S)	1	20 to 39	40 and more	1
		Ramp (N)	1	20 to 39	40 and more	1
	Mvoti	Mainline	1	20 to 39	40 and more	1
	Mandini	Ramp	1	20 to 39	40 and more	1
	Dokodweni	Ramp	1	20 to 39	40 and more	1
	Mtunzini	Mainline	1	20 to 39	40 and more	1
		Ramp (S)	1	20 to 39	40 and more	1
		Ramp (N)	1	20 to 39	40 and more	1
N3 Mariannhill	Mariannhill	Mainline	1	20 to 39	40 and more	1
N4 Magalies	Pelindaba	Mainline	1	20 to 39	40 and more	1
	Quagga	Mainline	1	20 to 39	40 and more	1
N17	Gosforth	Mainline	1	35 to 69	70 and more	1
		Ramp (W)	1	35 to 69	70 and more	1
		Ramp (E)	1	35 to 69	70 and more	1
	Dalpark	Mainline	1	35 to 69	70 and more	1
R30/R730/R34	Brandfort	Mainline	1	20 to 39	40 and more	1, 2 and 4

\*The relevant frequent user discount is applied to the value of the total number of passages completed within the stipulated period.

TOLL ROAD	PLAZA		CALENDAR MONTH	DISCOUNT FOR THE NO. OF PASSAGES		TOLL TARIFF TABLE
				Passages per month	Discount*	
N17	Leandra	Mainline	1	1 to 15	0%	1 and 2
		Ramp	1	16 to 20	40%	
	Trichardt	Mainline	1	21 to 30	55%	
	Ermelo	Mainline	1	31 and more	70%	

\*The frequent user discount as indicated only applies on the passages undertaken in the specific "passages per month" range at a specific toll plaza.

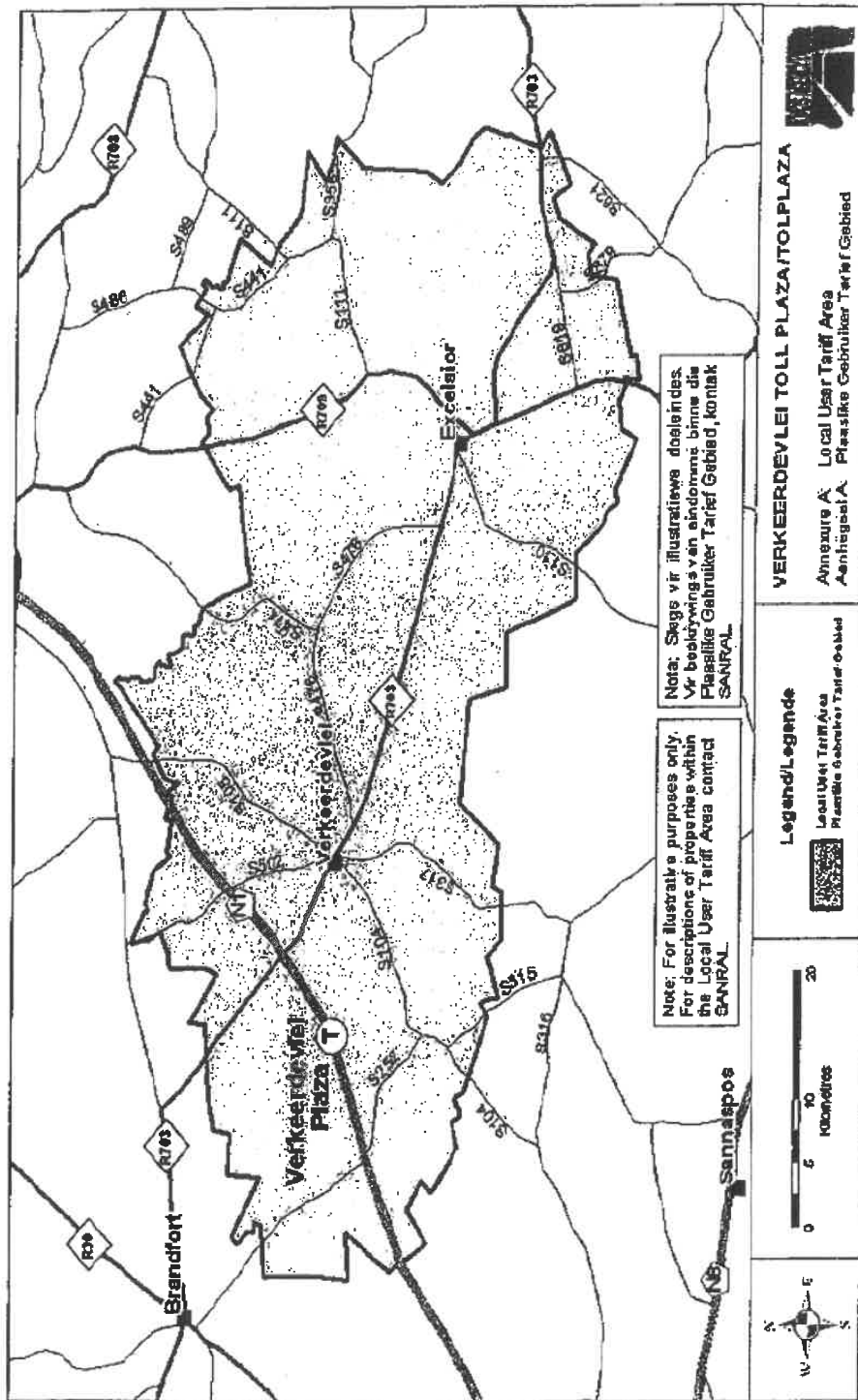
A valid SANRAL Tag ("Tolskyfie") must be locally registered and presented for payment at the qualifying toll plaza to qualify for Frequent-, Local- or Public Transport User Discount.

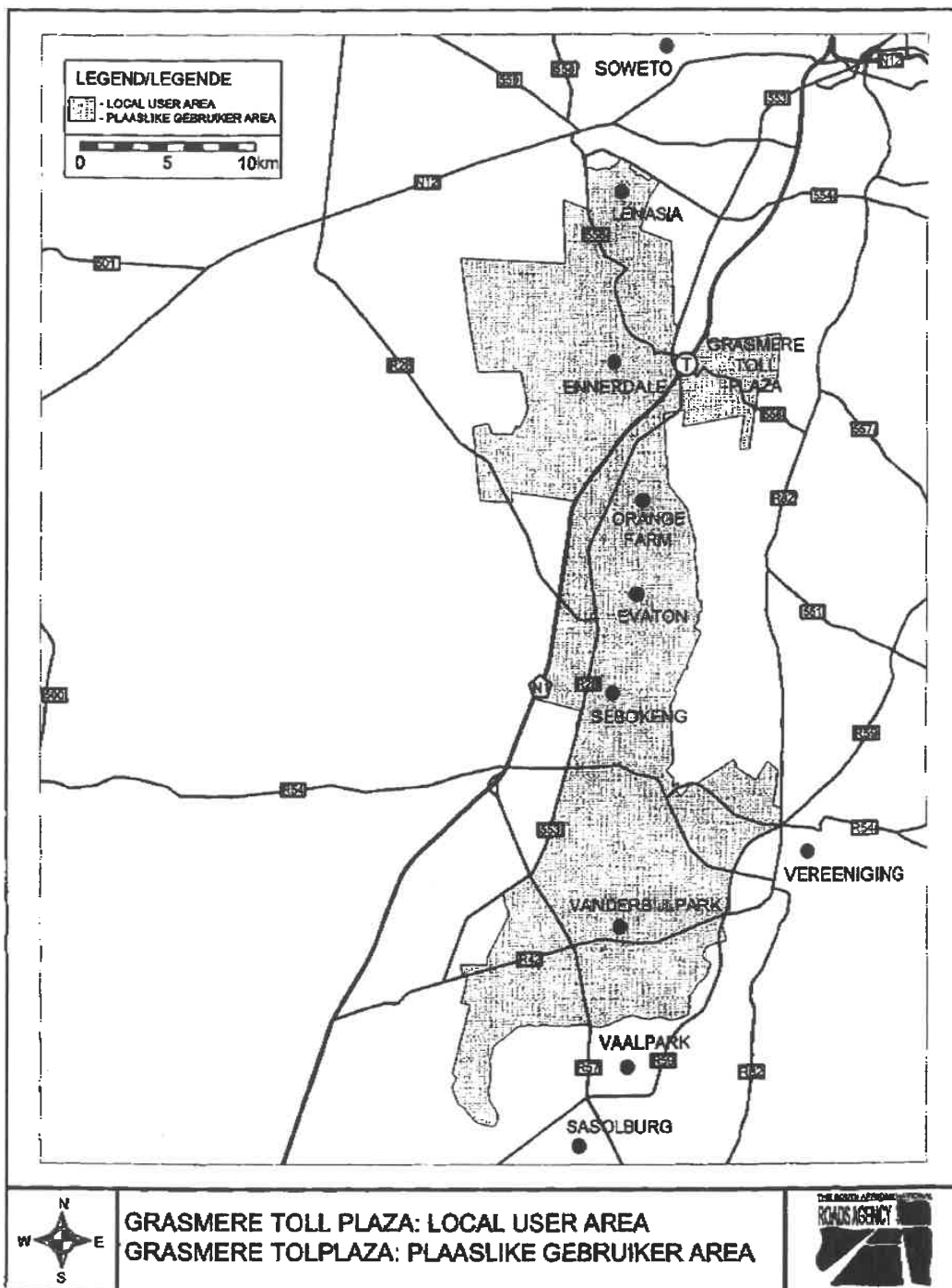
**7. OPERATIONAL HOURS**

- 7.1 The said toll roads shall be open to traffic for 24 hours a day.

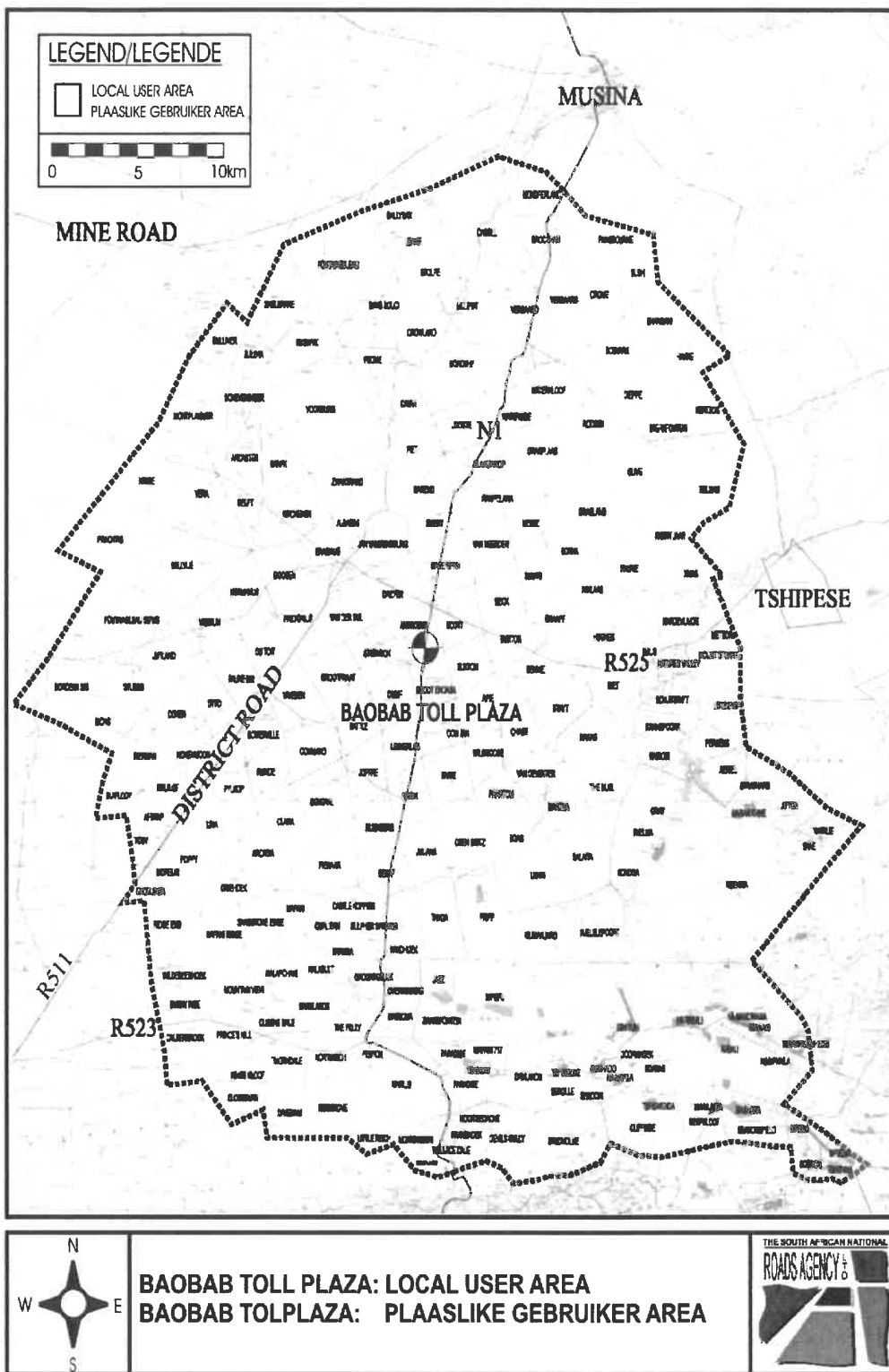
**8. EFFECTIVE DATE**

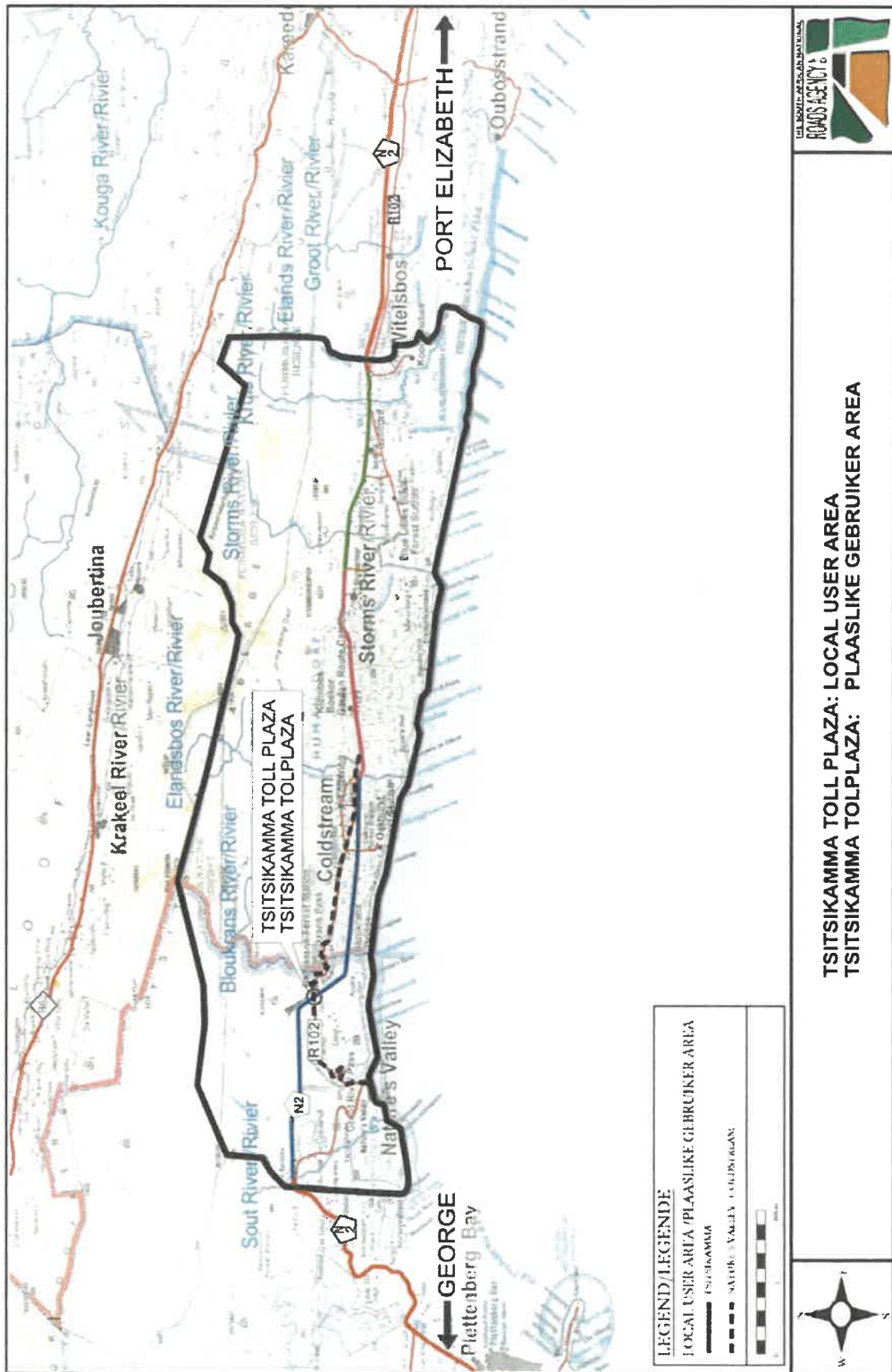
- 8.1 The date and time from which the said amounts of toll shall become payable, shall be 1 March 2026 at 00:00.

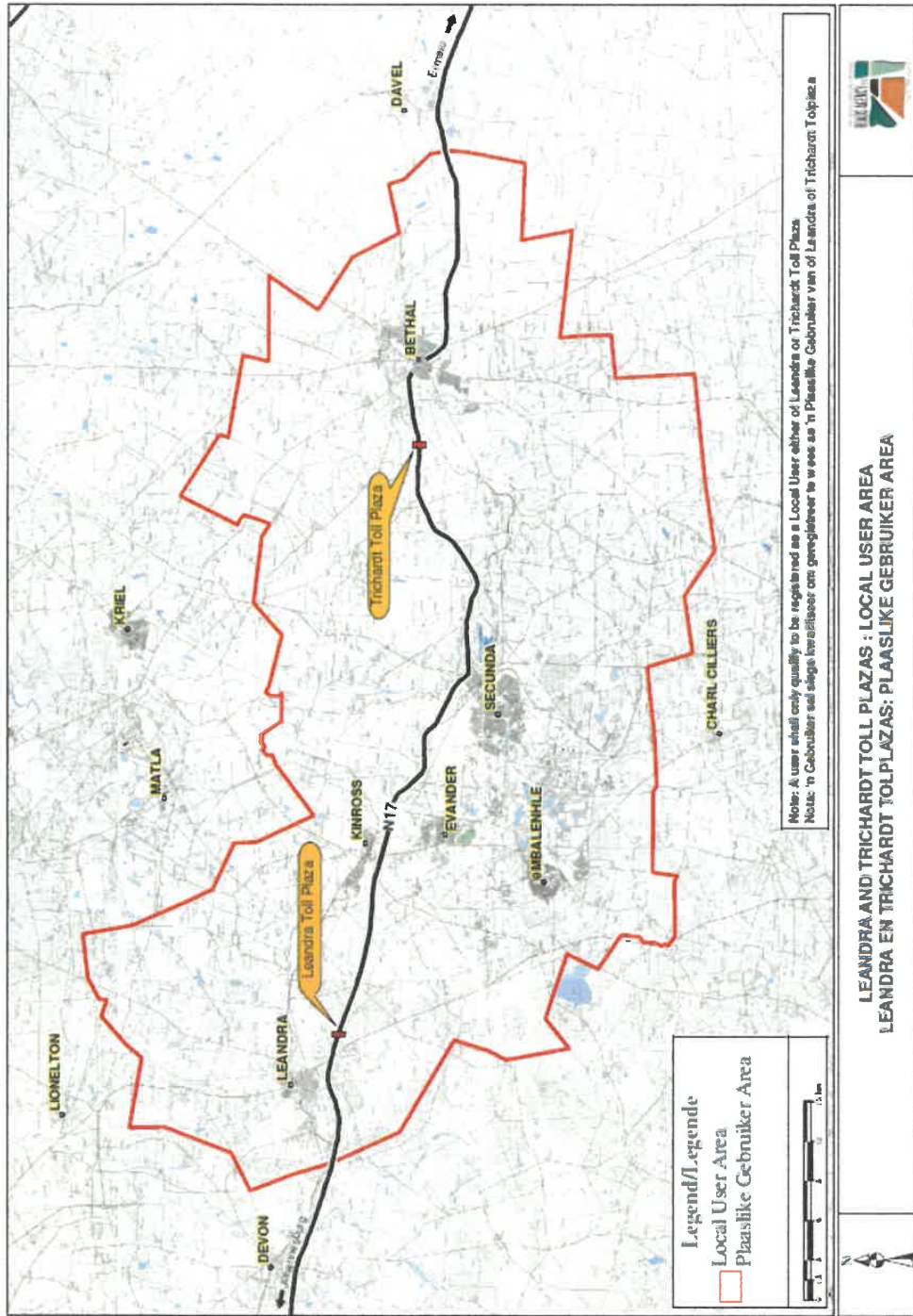


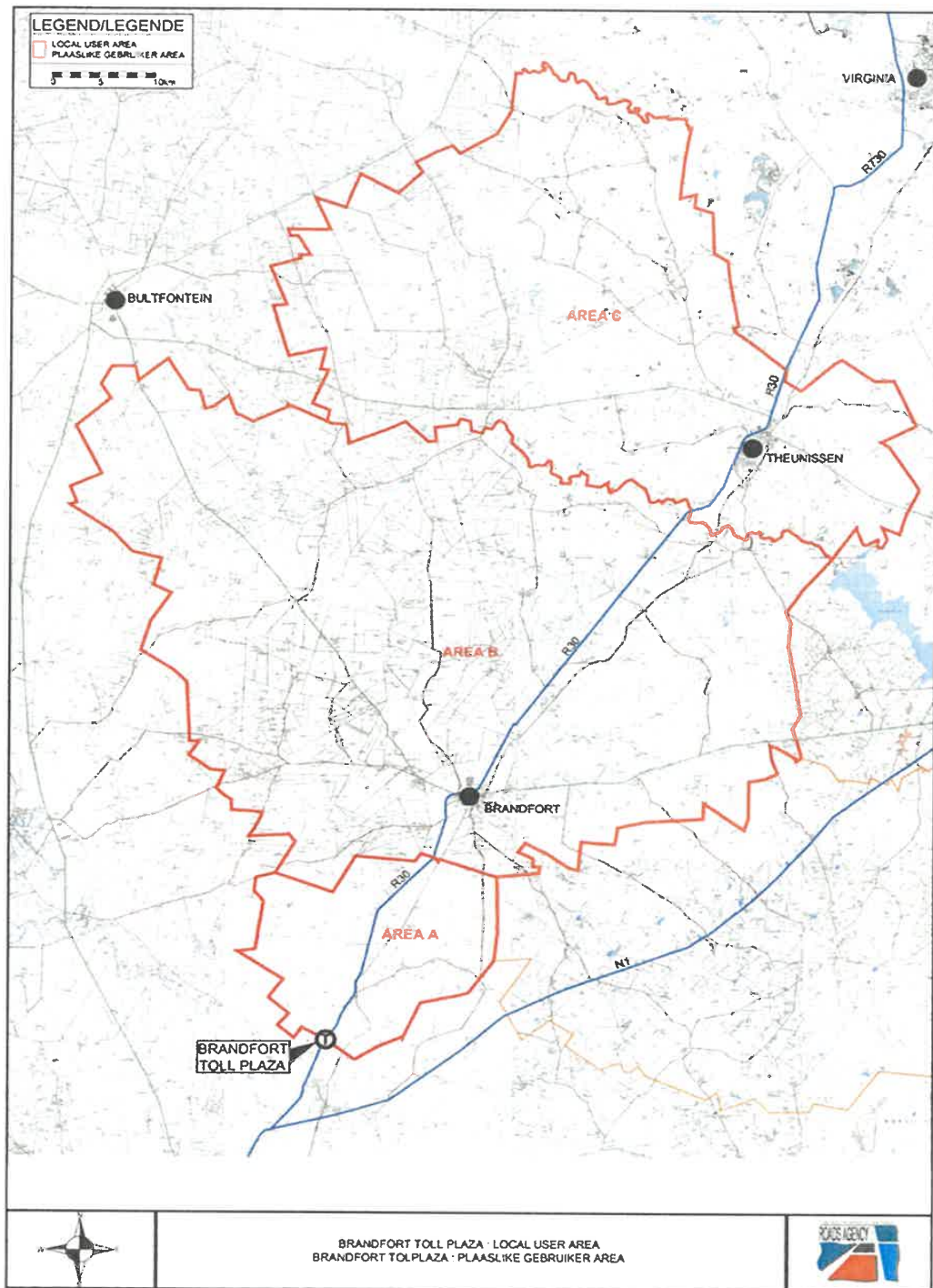












## DEPARTEMENT VAN VERVOER

NO. 7099

5 Februarie 2026

## DIE SUID-AFRIKAANSE NASIONALE PADAGENTSKAP MSB BEPERK

**HUGENOTE, VAALRIVIER, VERRE NOORD, TSITSIKAMMA, SUIDKUS, NOORDKUS, MARIANHILL, MAGALIES, N17 EN R30/R730/R34 TOLPAAIE: PUBLISERING VAN DIE TOLBEDRAE VIR DIE VERSKILLENDE KATEGORIEë VAN MOTORVOERTUIE, EN DIE DATUM EN TYD VANAF DIE TOLBEDRAE BETAALBAAR WORD**

Die Hoof van die Departement maak hierby, kragtens die bepalings van artikel 28(4) saamgelees met artikel 27(3) van Die Suid-Afrikaanse Nasionale Padagentskap Beperk en Nasionale Paaie Wet, 1998 (Wet Nr. 7 van 1998) [die Wet], bekend dat die tolbedrae wat kragtens artikel 27(1)(b) van die Wet gehef sal word by die tolplazas geleë op die Hugenote, Vaalrivier, Verre Noord, Tsitsikamma, Suidkus, Noordkus, Mariannahill, Magalies, N17 en R30/R730/R34 Tolpaaie, en die datum en tyd vanaf die tolbedrae betaalbaar word, kragtens artikel 27(3)(a) van die Wet, deur die Minister van Vervoer bepaal is, en dat genoemde bedrae kragtens artikel 27(3)(b) en (d) van die Wet gehef sal word, soos in die Bylae uiteengesit.



**Mr Mathabatha Mokonyama**  
**WAARNEMENDE DIREKTEUR-GENERAAL: VERVOER**

**BYLAE****1. WOORDOMSKRYWINGS**

Die volgende woorde en uitdrukkings sal die betekenisse hê soos uiteengesit, tensy dit uit die samehang anders blyk.

- 1.1 **“Abnormale voertuig”** beteken ‘n motorvoertuig wat die wettige afmetings, soos beskryf in die Padverkeerswet, 1996 (Wet Nr. 93 van 1996), soos gewysig, of in enige ander wet oorskry.
- 1.2 **“As”** beteken ‘n toestel of stel toestelle, hetsy onafgebroke oor die breedte van die voertuig of nie, waarom die wiele van die voertuig ronddraai en wat so geplaas is dat wanneer die voertuig reguit vorentoe ry, die vertikale hartlyne van sodanige wiele in een vertikale vlak reghoekig met die langshartlyn van sodanige voertuig is. As sal ook ‘n as insluit waarvan die wiele opgelig en nie in kontak met die padoppervlak is nie.
- 1.3 **“Swaar as”** beteken ‘n as waarvan die wiele toegerus is met bande met ‘n grootte (spanranddeursnee) groter as 406,4 millimeter (16 duim), of ‘n as met meer as twee (2) wiele, ongeag die bandgrootte, maar nie ‘n as van ‘n motorfiets, ‘n motordriewiel of ‘n motorkar nie.
- 1.4 **“Swaar voertuig”** beteken ‘n motorvoertuig met minstens een swaar as en/of ‘n motorvoertuig wat ontwerp of aangepas is uitsluitlik of hoofsaaklik vir die vervoer van meer as sestien (16) persone.
- 1.5 **“Ligte afleweringvoertuig”** beteken ‘n motorvoertuig wat ontwerp of aangepas is vir die vervoer van persone en vrag met geen swaar as soos omskryf in paragraaf 1.3 hierbo nie.
- 1.6 **“Ligte voertuig”** beteken ‘n motorvoertuig, uitgesonderd ‘n swaar voertuig.
- 1.7 **“Motorkar”** beteken ‘n motorvoertuig, uitgesonderd ‘n motorfiets of motordriewiel, wat ontwerp of aangepas is uitsluitlik of hoofsaaklik vir die vervoer van hoogstens sestien (16) persone, maar uitgesluit enige voertuig met meer as twee (2) wiele, ongeag die bandgrootte, op enige as.
- 1.8 **“Motorfiets”** beteken ‘n motorvoertuig met twee wiele en ook enige sodanige voertuig waaraan ‘n syspan geheg is.
- 1.9 **“Motordriewiel”** beteken ‘n motorvoertuig, uitgesonderd ‘n motorfiets met syspan, wat drie wiele het en ontwerp is om bestuur te word deur middel van die tipe kontroles waarmee ‘n motorfiets gewoonlik toegerus is.
- 1.10 **“Motorvoertuig”** beteken ‘n entiteit bestaande uit een of meer meganies/elektries aangedrewe eenhede met of sonder sleepwa of sleepwaens wat fisies aan mekaar gekoppel is deur middel van sleepstange, sleeptoue of meganiese geleiding en sluit onder andere in:
  - (a) ‘n motorfiets;
  - (b) ‘n motordriewiel;
  - (c) ‘n motorkar;
  - (d) ‘n voertuig met pedale en met ‘n meganies/elektries aangedrewe eenheid as ‘n integrerende deel daarvan of daaraan vasgeheg en wat ontwerp of aangepas is om of deur middel van sodanige pedale of deur middel van die meganiese/elektriese eenheid of deur albei voortbeweeg te word; en
  - (e) ‘n ligte afleweringvoertuig (‘n bakkie).

- 1.11 “**Sleepwa**” beteken ‘n voertuig wat nie selfaangedrewe is nie en wat ontwerp of aangepas is om deur ‘n motorvoertuig getrek te word, maar sluit nie ‘n syspan wat aan ‘n motorfiets vasgeheg is in nie.

## 2. KATEGORIEë VAN MOTORVOERTUIE

**Klas 1:           Ligte voertuie:**

Ligte voertuie is motorvoertuie, uitgesonderd swaar voertuie soos hierbo omskryf, met of sonder sleepwa, en sluit motorfietse, motordriewiele en motorkarre in.

**Klas 2:           Medium swaar voertuie:**

Medium swaar voertuie, is swaar voertuie, soos hierbo omskryf, met twee asse.

**Klas 3:           Groot swaar voertuie:**

Groot swaar voertuie, is swaar voertuie, soos hierbo omskryf, met drie of vier asse.

**Klas 4:           Ekstra groot swaar voertuie:**

Ekstra groot swaar voertuie, is swaar voertuie, soos hierbo omskryf, met vyf of meer asse.

### 3. TOLTARIEF

- 3.1 Die tolbedrae vir die verskillende kategorieë motorvoertuie betaalbaar by die tolplazas geleë op die Hugenote, Vaalrivier, Verre Noord, Tsitsikamma, Suidkus, Noordkus, Mariannhill, Magalies, N17 en R30/R730/R34 Tolpaaie, vir die gebruik van 'n tolpad, of enige deel daarvan, is uiteengesit in Tabel 1.

TABEL 1: VOORGESTELDE AANGEPASDE TOLTARIEWE VIR SANRAL BEHEERDE TOLPAAIE: 1 MAART 2026 (15% BTW INGESLUIT)						
TOLPAD	PLAZA	KLAS 1	KLAS 2	KLAS 3	KLAS 4	
N1 Hugenote	Hugenote Hooflyn	R54.50	R151.00	R236.00	R383.00	
N1 Vaalrivier	Verkeerdevei Hooflyn	R78.50	R157.00	R236.00	R331.00	
	Vaal Hooflyn	R91.50	R172.00	R207.00	R275.00	
	Grasmere Hooflyn	R27.50	R82.00	R96.00	R126.00	
	Op-en-Afrit (S)	R14.00	R41.00	R48.00	R63.00	
	Op-en-Afrit (N)	R14.00	R41.00	R48.00	R63.00	
N1 Verre Noord	Kranskop Hooflyn	R61.50	R157.00	R210.00	R257.00	
	Op-en-Afrit	R17.00	R46.00	R54.00	R81.00	
	Nyl Hooflyn	R79.50	R149.00	R180.00	R241.00	
	Op-en-Afrit	R24.50	R46.00	R54.00	R69.00	
	Sebetiela en-Afrit	Op-	R24.50	R46.00	R58.00	R77.00
	Capricorn Hooflyn	R63.50	R175.00	R205.00	R256.00	
N2 Tsitsikamma	Baobab Hooflyn	R61.50	R168.00	R231.00	R278.00	
	Tsitsikamma Hooflyn	R73.00	R183.00	R438.00	R619.00	
	Op-en-Afrit	R73.00	R183.00	R438.00	R619.00	
N2 Suidkus	Izotsha Op-en-Afrit	R12.50	R23.00	R31.00	R54.00	
	Oribi Hooflyn	R41.00	R73.00	R100.00	R162.00	
	Op-en-Afrit (S)	R18.50	R34.00	R46.00	R73.00	
	Op-en-Afrit (N)	R22.00	R38.00	R54.00	R100.00	
	Umtentweni Op-en-Afrit	R17.50	R31.00	R42.00	R69.00	
N2 Noordkus	King Shaka Lughawe Oprit	R8.50	R17.00	R26.00	R34.00	
	oThongathi Hooflyn	R15.50	R32.00	R42.00	R62.00	
	Op-en-Afrit (S)	R7.50	R17.00	R21.00	R31.00	
	Op-en-Afrit (N)	R7.50	R17.00	R21.00	R31.00	
	Mvoti Hooflyn	R18.50	R52.00	R70.00	R104.00	
	Mandini en-Afrit	Op-	R10.00	R19.00	R23.00	R31.00
	Dokodweni en-Afrit	Op-	R27.00	R53.00	R62.00	R84.00
	Mtunzini Hooflyn	R63.50	R122.00	R146.00	R217.00	
	Op-en-Afrit (S)	R53.00	R99.00	R119.00	R172.00	
	Op-en-Afrit (N)	R11.50	R23.00	R27.00	R45.00	

**TABEL 1: VOORGESTELDE AANGEPASDE TOLTARIEWE VIR SANRAL BEHEERDE TOLPAAIE: 1 MAART 2026 (15% BTW INGESLUIT)**

N3 Mariannhill	Mariannhill Hooflyn	R16.50	R30.00	R37.00	R57.00	
N4 Magalies	Pelindaba Hooflyn	R8.00	R15.00	R21.00	R27.00	
	Quagga Hooflyn	R6.50	R11.00	R16.00	R21.00	
N17	Gosforth Hooflyn	R17.00	R46.00	R50.00	R69.00	
	Op-en-Afrit (W)	R9.50	R19.00	R25.00	R33.00	
	Op-en-Afrit (E)	R7.50	R29.00	R31.00	R42.00	
	Dalpark Hooflyn	R15.50	R32.00	R42.00	R58.00	
	Denne en-Afrit	Op-	R13.50	R27.00	R35.00	R46.00
	Leandra Hooflyn		R50.50	R127.00	R190.00	R253.00
	Op-en-Afrit		R30.50	R77.00	R113.00	R152.00
	Trichardt Hooflyn		R25.00	R63.00	R96.00	R127.00
	Ermelo Hooflyn		R45.00	R114.00	R170.00	R226.00
R30/R730/R34	Brandfort Hooflyn	R62.50	R125.00	R188.00	R265.00	

#### 4. PLAASLIKE GEBRUIKER TOLTARIEF

- 4.1 'n Plaaslike gebruiker toltarief, vir verskillende kategorieë van motorvoertuie, word toegestaan, onderhewig aan die terme en voorwaardes van die Suid-Afrikaanse Nasionale Padagentskap MSB Beperk (SANRAL) (beskikbaar by die Tolplazas), aan geregistreerde *bona fide* inwoners, werkgewers of werknemers geleë binne 'n goedgekeurde plaaslike gebruiker area, na suksesvolle aansoek by die toepaslike toloperateur.
- 4.2 Die plaaslike gebruiker toltariewe vir die plaaslike gebruiker areas, soos aangedui op die verskeie kaarte aangeheg by hierdie Kennisgewing en waarvan 'n afskrif by SANRAL verkry kan word, vir die verskillende kategorieë van motorvoertuie, betaalbaar by die Verkeerdevei, Grasmere, Capricorn, Baobab, Tsitsikamma, Leandra, Trichardt, Ermelo en Brandfort Tolplazas, geleë op die Vaalrivier, Verre Noord, Tsitsikamma, N17 en R30/R730/R34 Tolpaaie, is uiteengesit in Tabel 2.

**TABEL 2: PLAASLIKE GEBRUIKER TOLTARIEF - TIPE A (15% BTW INGESLUIT)**

TOLPAD	PLAZA	PLAASLIKE GEBRUIKER AREA	KLAS 1	KLAS 2	KLAS 3	KLAS 4
N1 Vaalrivier	Verkeerdevei Hooflyn	Verkeerdevei	R25.00	R50.00	R75.00	R100.00
	Grasmere Hooflyn	Evaton Sebokeng Vanderbijlpark	R4.50			
	Op-en-Afrit (S)	Ennerdale Lenasia South	R2.50			
	Op-en-Afrit (N)	Ennerdale Lenasia South	R2.50			
	Capricorn Hooflyn	Capricorn	R19.50	R39.00	R47.00	R67.00

N1 Verre Noord	Baobab Hooflyn	Baobab	R22.50	R55.00	R75.00	R96.00
	Baobab Hooflyn	Tshipise	R32.50	R81.00	R114.00	R146.00
N2 Tsitsikamma	Tsitsikamma Hooflyn	Tsitsikamma	R23.00			
	Op-en-Afrit Hooflyn Op-en-Afrit	Nature's Valley Coldsream	R11.50			
N17	Leandra Hooflyn	Leandra	R32.00	R80.00	R120.00	R160.00
	Op-en-Afrit	Leandra	R19.00	R49.00	R71.00	R96.00
	Trichardt Hooflyn	Trichardt	R13.50	R33.00	R50.00	R67.00
	Ermelo Hooflyn	Ermelo	R24.00	R62.00	R89.00	R119.00
R30/R730/ R34	Brandfort Hooflyn	Area A	R6.50	R13.00	R20.00	R28.00
		Area B	R13.00	R26.00	R40.00	R56.00
		Area C	R26.50	R53.00	R79.00	R112.00

- 4.3 Die plaaslike gebruiker toltariewe vir die plaaslike gebruiker area, vir die verskillende kategorieë van motorvoertuie, betaalbaar by die Mvoti Tolplaza geleë op die Noordkus Tolpad, is uiteengesit in Tabel 3.

TABEL 3: PLAASLIKE GEBRUIKER TOLTARIEF - TIPE B (15% BTW INGESLUIT)							
TOLPAD	PLAZA		PLAASLIKE GEBRUIKER AREA	KLAS 1	KLAS 2	KLAS 3	KLAS 4
N2 Noordkus	Mvoti	Hooflyn	KwaDukzuza	R6.00	R14.00	R20.00	R28.00
N2 Noordkus	Dokodweni	Op-en-Afrit	Mandeni Local Municipality wards 1, 2, 3, 8 and 9	R4.00	R8.50	R9.50	R13.00

## 5. PLAASLIKE OPENBARE VERVOER OPERATEUR TOLTARIEF

- 5.1 'n Plaaslike openbare vervoer operateur toltarief, vir Klas 1 motorvoertuie alleen, word toegestaan, onderhewig aan die terme en voorwaardes van SANRAL (beskikbaar by die Tolplazas), aan geregistreerde *bona fide* plaaslike openbare vervoer operateurs wat binne 'n goedgekeurde plaaslike gebruiker area opereer, na suksesvolle aansoek by die toepaslike toloperateur.
- 5.2 Die plaaslike openbare vervoer operateur toltariewe vir die plaaslike gebruiker areas soos aangedui op die verskeie kaarte aangeheg by hierdie Kennisgewing en waarvan 'n afskrif by SANRAL verkry kan word, vir Klas 1 motorvoertuie alleen, betaalbaar by die Verkeerdevlei, Capricorn, Baobab en Brandfort Tolplazas geleë op die Vaalrivier, Verre Noord en R30/R730/R34 Tolpaaie, is uiteengesit in Tabel 4.

TABEL 4: PLAASLIKE OPENBARE VERVOER OPERATEUR TOLTARIEF (15% BTW INGESLUIT)				
TOLPAD	PLAZA		PLAASLIKE GEBRUIKER AREA	KLAS 1
N1 Vaalrivier	Verkeerdevlei	Hooflyn	Verkeerdevlei	R25.00
N1 Verre Noord	Capricorn	Hooflyn	Capricorn	R19.50
	Baobab	Hooflyn	Baobab	R20.50
R30/R730/R34	Brandfort	Hooflyn	Areas A, B & C	R12.50

## 6. GEREELDE GEBRUIKER AFSLAG

- 6.1 By spesifieke tolplazas, word 'n gereelde gebruiker afslag op die tolbedrag, alleenlik vir Klas 1 motorvoertuie toegestaan, onderhewig aan die terme en voorwaardes van SANRAL (beskikbaar by die Tolplazas), aan geregistreerde gereelde gebruikers wat 'n voorgeskrewe aantal deurgange binne 'n bepaalde periode voltooi, na suksesvolle aansoek by die toepaslike toloperateur. By sommige van die spesifieke tolplazas, mag 'n geregistreerde *bona fide* plaaslike gebruiker en 'n geregistreerde *bona fide* plaaslike openbare vervoer operateur ook registreer as 'n gereelde gebruiker. Die gereelde gebruiker afslag word toegepas, na gelang van die aantal deurgange voltooi binne die bepaalde periode, of aan die waarde van die totale aantal deurgange, of aan die spesifieke reeks van deurgange.
- 6.2 Die gereelde gebruiker afslae vir die spesifieke tolplazas geleë op die Hugenote, Vaalrivier, Verre Noord, Suidkus, Noordkus, Mariannhill, Magalies, N17 en R30/R730/R34 Tolpaaie, vir Klas 1 motorvoertuie alleen, na gelang van die aantal deurgange voltooi binne die bepaalde periode, op die tolbedrae soos vermeld in die toepaslike tabelle, is uiteengesit in Tabele 5.1 en 5.2.

TABEL 5.1: GEREELDE GEBRUIKER AFSLAG – TIPE A						
TOLPAD	PLAZA	KALENDER MAAND	AFSLAG NA GELANG VAN AANTAL DEURGANGE		TOLTARIEF TABEL	
			20%*	40%*		
N1 Hugenote	Hugenote	Hooflyn	1	20 tot 39	40 en meer	1
N1 Vaalrivier	Verkeerdevlei	Hooflyn	1	20 tot 39	40 en meer	1, 2 en 4
	Grasmere	Hooflyn	1	20 tot 39	40 en meer	1
N1 Verre Noord	Capricorn	Hooflyn	1	20 tot 39	40 en meer	1, 2 en 4
	Baobab	Hooflyn	1	20 tot 39	40 en meer	1, 2 en 4
N2 Suidkus	Izotsha	Op- en Afrit	3	20 tot 39	40 en meer	1
	Oribi	Hooflyn	3	20 tot 39	40 en meer	1
		Op- en Afrit (S)	3	20 tot 39	40 en meer	1
		Op- en Afrit (N)	3	20 tot 39	40 en meer	1
	Umtentweni	Op- en Afrit	3	20 tot 39	40 en meer	1
N2 Noordkus	King Shaka Lughawe	Oprit	1	10 tot 19	20 en meer	1
	oThongathi	Hooflyn	1	20 tot 39	40 en meer	1
		Op- en Afrit (S)	1	20 tot 39	40 en meer	1
		Op- en Afrit (N)	1	20 tot 39	40 en meer	1
	Mvoti	Hooflyn	1	20 tot 39	40 en meer	1
	Mandini	Op- en Afrit	1	20 tot 39	40 en meer	1
	Dokodweni	Op- en Afrit	1	20 tot 39	40 en meer	1
	Mtunzini	Hooflyn	1	20 tot 39	40 en meer	1
		Op- en Afrit (S)	1	20 tot 39	40 en meer	1
		Op- en Afrit (N)	1	20 tot 39	40 en meer	1
N3 Mariannahill	Mariannahill	Hooflyn	1	20 tot 39	40 en meer	1
N4 Magalies	Pelindaba	Hooflyn	1	20 tot 39	40 en meer	1
	Quagga	Hooflyn	1	20 tot 39	40 en meer	1
N17	Gosforth	Hooflyn	1	35 tot 69	70 en meer	1
		Op- en Afrit (W)	1	35 tot 69	70 en meer	1
		Op- en Afrit (O)	1	35 tot 69	70 en meer	1
	Dalpark	Hooflyn	1	35 tot 69	70 en meer	1
R30/R730/R34	Brandfort	Hooflyn	1	20 tot 39	40 en meer	1, 2 en 4

\*Die betrokke gereelde gebruiker afslag word toegepas aan die waarde van die totale deurgange voltooi binne die bepaalde period.

TABEL 5.2: GEREELDE GEBRUIKER AFSLAG – TIPE B						
TOLPAD	PLAZA	KALENDER MAAND	AFSLAG NA GELANG VAN AANTAL DEURGANGE		TOLTARIEF TABEL	
			Deurgange per maand	Afslag*		
N17	Leandra	Hooflyn	1	1 to 15	0%	1 en 2
		Op- en Afrit	1	16 to 20	40%	
	Trichardt	Hooflyn	1	21 to 30	55%	
	Ermelo	Hooflyn	1	31 en meer	70%	

\*Die gereelde gebruiker afslag soos aangedui is slegs van toepassing op die deurgange wat in die spesifieke "deurgange per maand" reeks by 'n spesifieke tolplaza onderneem.

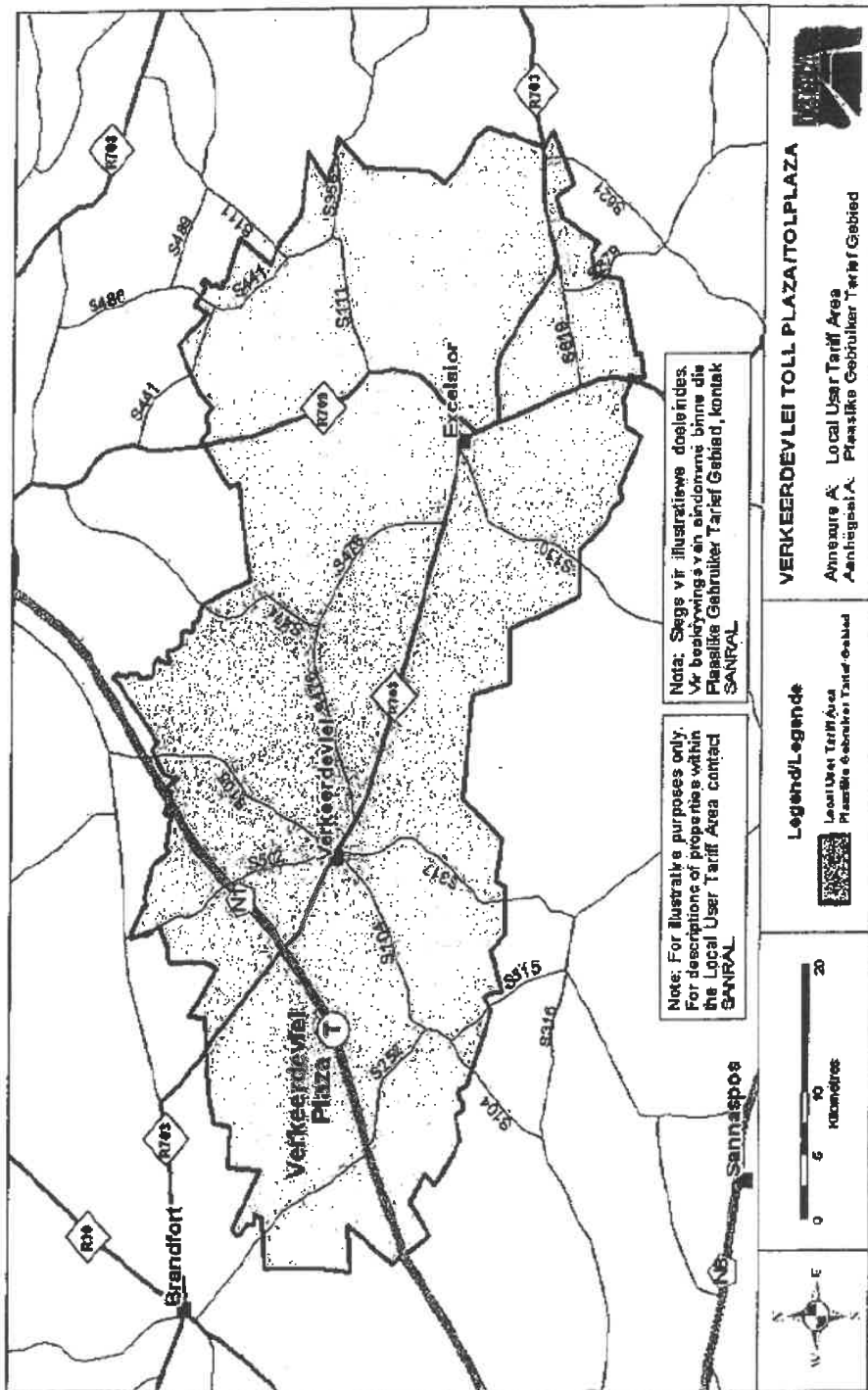
'n Geldige SANRAL Tolskyfie moet plaaslik geregistreer, en aangebied word as betaling, by die toepaslike tolplaza om te kwalifiseer vir Gereelde-, Plaaslike- of Openbare Vervoer Gebruikers, korting.

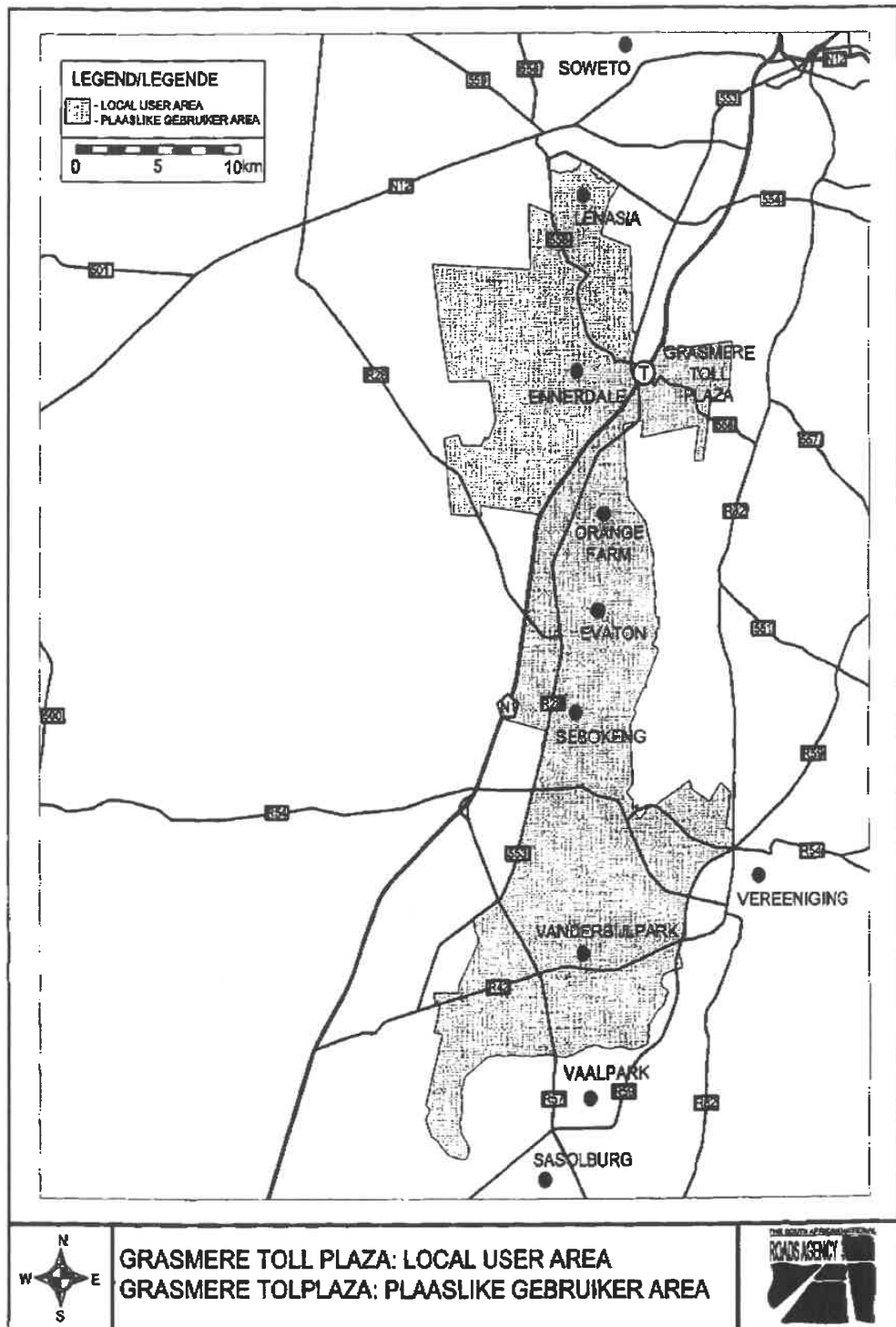
**7. OPERASIONELE URE**

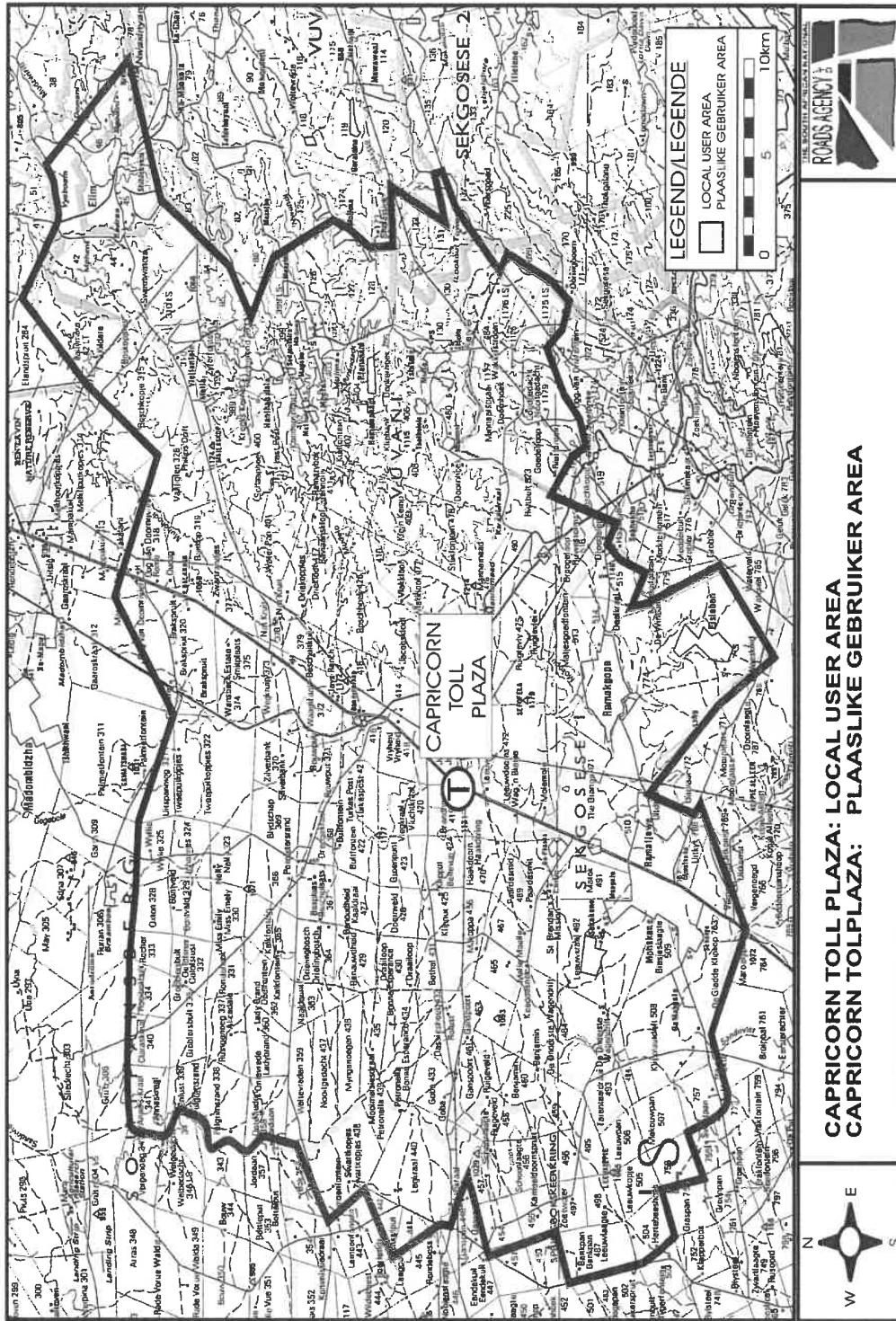
7.1 Die genoemde tolpaai sal 24 uur per dag oop wees vir verkeer.

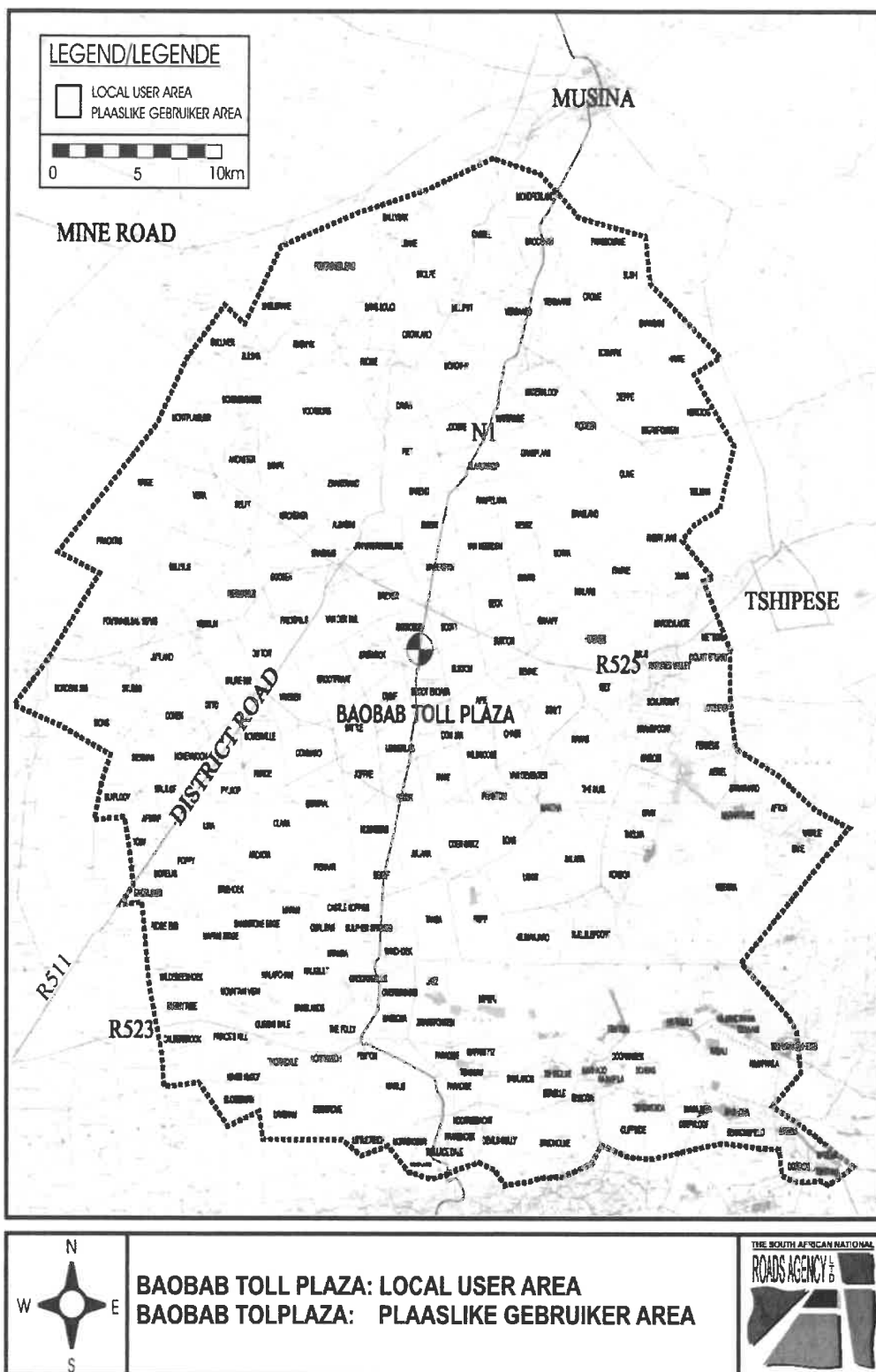
**8. INWERKINGTREDINGSDATUM**

8.1 Die datum en tyd wanneer die genoemde tolbedrae betaalbaar word, is 1 Maart 2026 om 00:00.





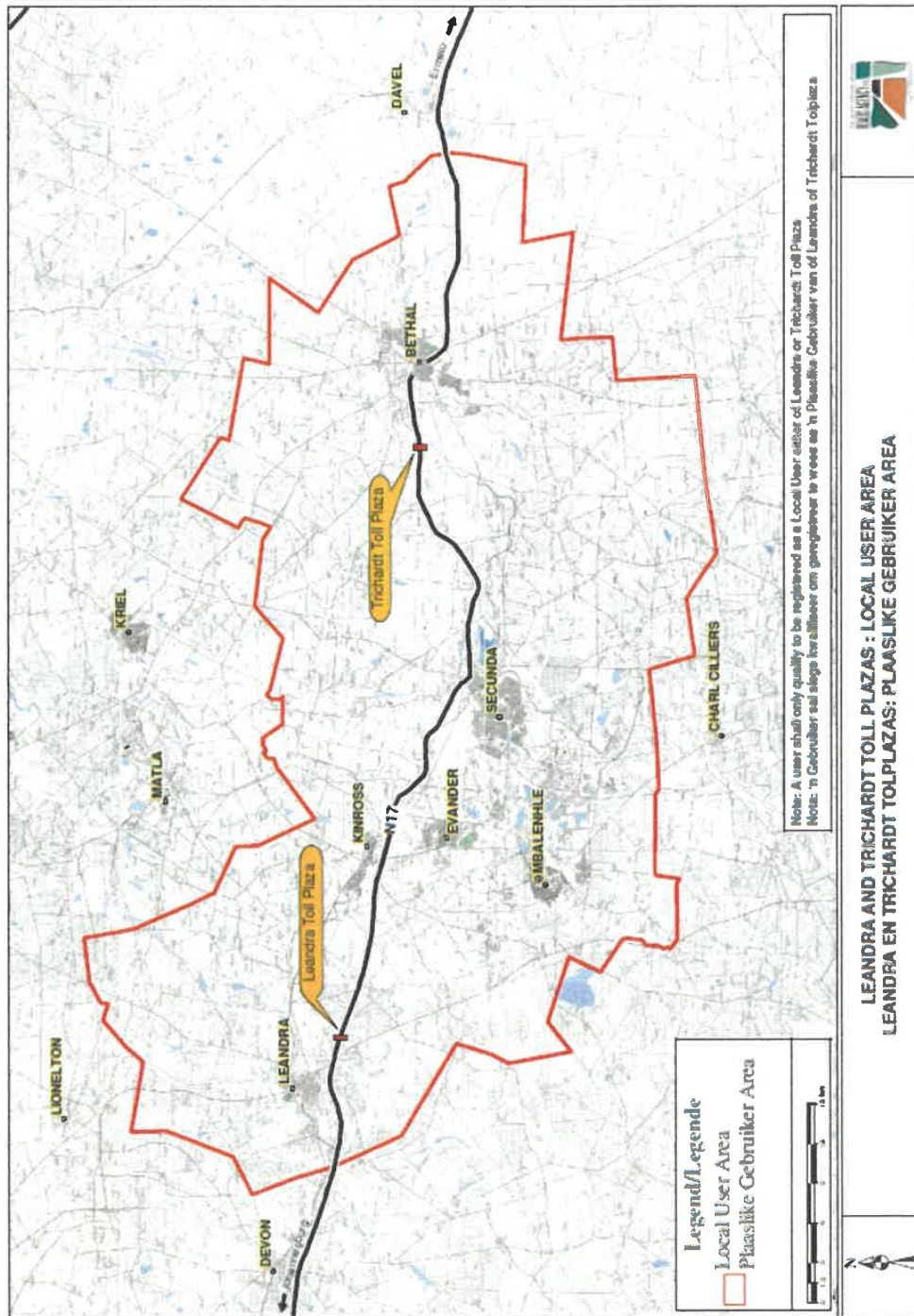




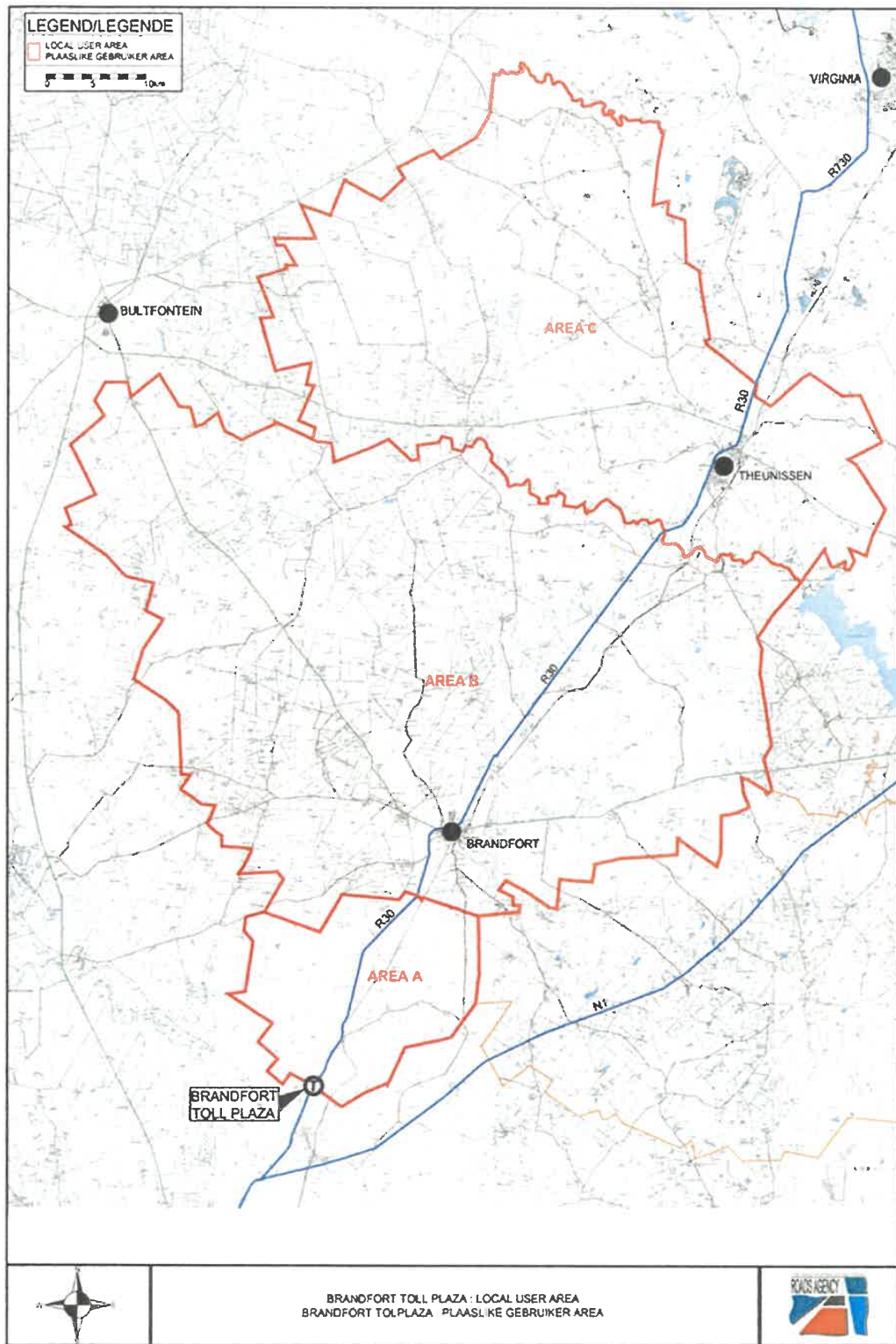
**BAOBAB TOLL PLAZA: LOCAL USER AREA**  
**BAOBAB TOLPLAZA: PLAASLIKE GEBRUIKER AREA**







LEANDRA AND TRICHARDT TOLL PLAZAS : LOCAL USER AREA  
LEANDRA EN TRICHARDT TOLLPLAZAS: PLAASLIKE GEBRUIKER AREA





Printed by and obtainable from the Government Printer, Bosman Street, Private Bag X85, Pretoria, 0001  
Contact Centre Tel: 012-748 6200. eMail: [info.egazette@gpw.gov.za](mailto:info.egazette@gpw.gov.za)  
Publications: Tel: (012) 748 6053, 748 6061, 748 6065